

OUT DOOR



PIETRA / **STONE**

- 14 **PIERRE VIVE**
- 22 **NATIVA**
- 34 **LE REVERSE**
- 38 **PIASENTINA**
- 42 **ROCKS**
- 46 **CARRIERE DU KRONOS**
- 50 **EVOLUTION**
- 54 **BLOCK**

CEMENTO / **CONCRETE**

- 66 **MATERIA**
- 74 **TERRA CREA**
- 78 **PRIMA MATERIA**

LEGNO / **WOOD**

- 90 **ESSENCE**
- 95 **LES BOIS**
- 99 **WOODSIDE**

102 TIPOLOGIE DI POSA
LAYING INSTRUCTION

108 GAMMA PRODOTTI
RANGE

114 CARATTERISTICHE TECNICHE
TECHNICAL CHARACTERISTICS

outdoor tiles
STONE

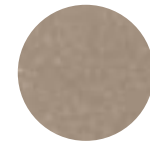
PIERRE VIVE



LOIRE NOBLE



ORVAL NOBLE



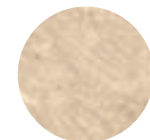
MORVAN NOBLE



BRIONNE NOBLE



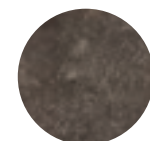
LOIRE ANCIENNE



ORVAL ANCIENNE

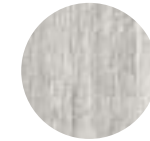


MORVAN ANCIENNE

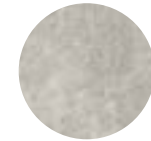


BRIONNE ANCIENNE

NATIVA



LUX VENA



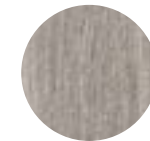
LUX FALDA



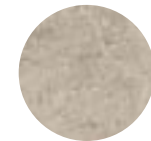
AURUM VENA



AURUM FALDA



TIBUR VENA



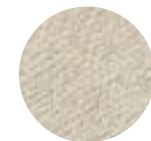
TIBUR FALDA



LAPILLO VENA



LUX ARMIS 2.0

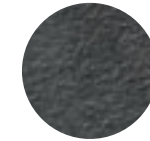


AURUM ARMIS 2.0

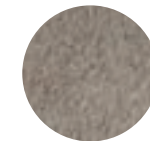


TIBUR ARMIS 2.0

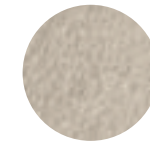
LE REVERSE



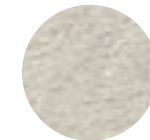
NUIT



TAUPE



DUNE



OPAL

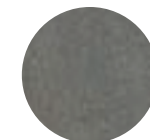
PIASENTINA



FLAMED



SILVER BLACK



PORFIDO

CARRIERE DU KRONOS



NAMUR



GENT

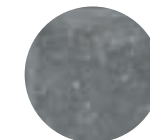


BRUGES

EVOLUTION DU KRONOS



EVO NOIR

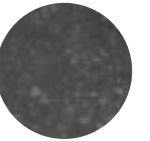


EVO GRIS FONCE



EVO GREYGE

BLOCK



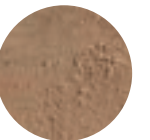
NAMUR



GENT



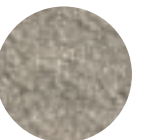
BRUGES



COTTO



PORFIDO



FLAMED





FLOOR: BLOCK Cotto 20,2x20,2 - 8"x8"



FLOOR: BLOCK Gent 20,2x20,2 - 8"x8" **WASHBASIN WALL:** BLOCK Gent 20,2x20,2 - 8"x8"
WASHBASIN: CARRIÈRE DU KRONOS Namur - CARRIÈRE DU KRONOS Namur Marinieri



FLOOR: LE REVERSE Dune 2.0 60x120 - 24"x48" / 60x60 - 24"x24" / 80x80 - 32"x32"

TABLE: LE REVERSE Dune Elegance **PLANTER:** LE REVERSE Dune Carved 2.0 **KITCHEN TOP:** LE REVERSE Dune Carved



PIERRE VIVE NOBLE

LOIRE



≠ 9 mm **GRIP R11**

120x120 - 48"x48"

PV206 LOIRE GRIP

60x120 - 24"x48"

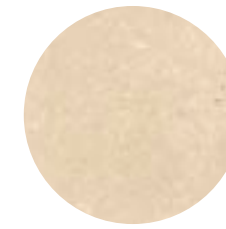
PV176 LOIRE GRIP

≠ 20 mm **SKE 2.0**

60x120 - 24"x48"

PV121 LOIRE 2.0

ORVAL



≠ 9 mm **GRIP R11**

120x120 - 48"x48"

PV207 ORVAL GRIP

60x120 - 24"x48"

PV177 ORVAL GRIP

≠ 20 mm **SKE 2.0**

60x120 - 24"x48"

PV122 ORVAL 2.0

MORVAN



≠ 9 mm **GRIP R11**

120x120 - 48"x48"

PV208 MORVAN GRIP

60x120 - 24"x48"

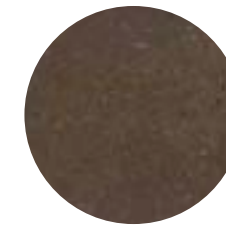
PV178 MORVAN GRIP

≠ 20 mm **SKE 2.0**

60x120 - 24"x48"

PV123 MORVAN 2.0

BRIONNE



≠ 9 mm **GRIP R11**

120x120 - 48"x48"

PV209 BRIONNE GRIP

60x120 - 24"x48"

PV179 BRIONNE GRIP

≠ 20 mm **SKE 2.0**

60x120 - 24"x48"

PV124 BRIONNE 2.0

LOIRE 2.0

ORVAL 2.0

MORVAN 2.0

BRIONNE 2.0



PIERRE VIVE ANCIENNE

LOIRE



≠ 9 mm **GRIP R11**

60x120 - 24"x48"

PV026 LOIRE GRIP

80x80 - 32"x32"

PV036 LOIRE GRIP

40x80 - 16"x32"

PV046 LOIRE GRIP

60x60 - 24"x24"

PV056 LOIRE GRIP

≠ 20 mm **SKE 2.0**

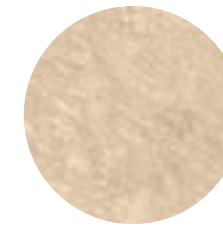
60x120 - 24"x48"

PV101 LOIRE 2.0

60x60 - 24"x24"

PV106 LOIRE 2.0

ORVAL



≠ 9 mm **GRIP R11**

60x120 - 24"x48"

PV027 ORVAL GRIP

80x80 - 32"x32"

PV037 ORVAL GRIP

40x80 - 16"x32"

PV047 ORVAL GRIP

60x60 - 24"x24"

PV057 ORVAL GRIP

≠ 20 mm **SKE 2.0**

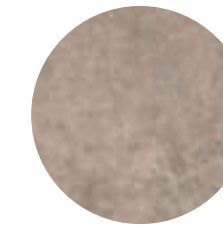
60x120 - 24"x48"

PV102 ORVAL 2.0

60x60 - 24"x24"

PV107 ORVAL 2.0

MORVAN



≠ 9 mm **GRIP R11**

60x120 - 24"x48"

PV028 MORVAN GRIP

80x80 - 32"x32"

PV038 MORVAN GRIP

40x80 - 16"x32"

PV048 MORVAN GRIP

60x60 - 24"x24"

PV058 MORVAN GRIP

≠ 20 mm **SKE 2.0**

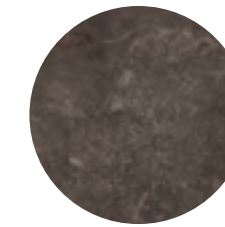
60x120 - 24"x48"

PV103 MORVAN 2.0

60x60 - 24"x24"

PV108 MORVAN 2.0

BRIONNE



≠ 9 mm **GRIP R11**

60x120 - 24"x48"

PV029 BRIONNE GRIP

80x80 - 32"x32"

PV039 BRIONNE GRIP

40x80 - 16"x32"

PV049 BRIONNE GRIP

60x60 - 24"x24"

PV059 BRIONNE GRIP

≠ 20 mm **SKE 2.0**

60x120 - 24"x48"

PV104 BRIONNE 2.0

60x60 - 24"x24"

PV109 BRIONNE 2.0

ANCIENNE VINTAGE

≠ 9 mm **GRIP R11**

80x80 - 32"x32"

PV066 LOIRE GRIP

40x80 - 16"x32"

PV086 LOIRE GRIP

60x60 - 24"x24"

PV096 LOIRE GRIP

40x40 - 16"x16"

PV171 LOIRE GRIP

20x20 - 8"x8"

PV161 LOIRE GRIP

MODULO 80

PV076 LOIRE GRIP

MODULO 120

PV196 LOIRE GRIP

≠ 20 mm **SKE 2.0**

60x120 - 24"x48"

PV201 LOIRE 2.0

60x60 - 24"x24"

PV111 LOIRE 2.0

MODULO 120

PV116 LOIRE 2.0

≠ 9 mm **GRIP R11**

80x80 - 32"x32"

PV067 ORVAL GRIP

40x80 - 16"x32"

PV087 ORVAL GRIP

60x60 - 24"x24"

PV097 ORVAL GRIP

40x40 - 16"x16"

PV172 ORVAL GRIP

20x20 - 8"x8"

PV162 ORVAL GRIP

MODULO 80

PV077 ORVAL GRIP

MODULO 120

PV197 ORVAL GRIP

≠ 20 mm **SKE 2.0**

60x120 - 24"x48"

PV202 ORVAL 2.0

60x60 - 24"x24"

PV112 ORVAL 2.0

MODULO 120

PV117 ORVAL 2.0

≠ 9 mm **GRIP R11**

80x80 - 32"x32"

PV068 MORVAN GRIP

40x80 - 16"x32"

PV088 MORVAN GRIP

60x60 - 24"x24"

PV098 MORVAN GRIP

40x40 - 16"x16"

PV173 MORVAN GRIP

20x20 - 8"x8"

PV163 MORVAN GRIP

MODULO 80

PV078 MORVAN GRIP

MODULO 120

PV198 MORVAN GRIP

≠ 20 mm **SKE 2.0**

60x120 - 24"x48"

PV203 MORVAN 2.0

60x60 - 24"x24"

PV113 MORVAN 2.0

MODULO 120

PV118 MORVAN 2.0

≠ 9 mm **GRIP R11**

80x80 - 32"x32"

PV069 BRIONNE GRIP

40x80 - 16"x32"

PV089 BRIONNE GRIP

60x60 - 24"x24"

PV099 BRIONNE GRIP

40x40 - 16"x16"

PV174 BRIONNE GRIP

20x20 - 8"x8"

PV164 BRIONNE GRIP

MODULO 80

PV079 BRIONNE GRIP

MODULO 120

PV199 BRIONNE GRIP

≠ 20 mm **SKE 2.0**

60x120 - 24"x48"

PV204 BRIONNE 2.0

60x60 - 24"x24"

PV114 BRIONNE 2.0

MODULO 120

PV119 BRIONNE 2.0



LOIRE 2.0



ORVAL 2.0



MORVAN 2.0

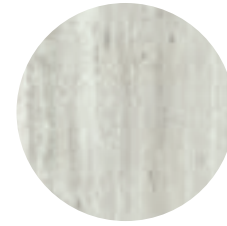


BRIONNE 2.0



NATIVA VENA  ^{V3}

LUX



≠ 9 mm **GRIP R11**

60x120 - 24"x48"

NA015 LUX VENA GRIP

≠ 20 mm **SKE 2.0**

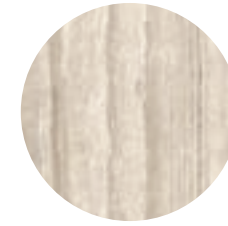
80x180 - 32"x72"

NA066 LUX VENA 2.0

60x120 - 24"x48"

NA069 LUX VENA 2.0

AURUM



≠ 9 mm **GRIP R11**

60x120 - 24"x48"

NA014 AURUM VENA GRIP

≠ 20 mm **SKE 2.0**

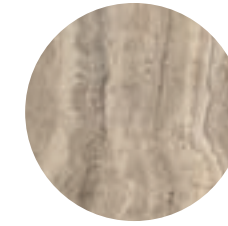
80x180 - 32"x72"

NA065 AURUM VENA 2.0

60x120 - 24"x48"

NA068 AURUM VENA 2.0

TIBUR



≠ 9 mm **GRIP R11**

60x120 - 24"x48"

NA013 TIBUR VENA GRIP

≠ 20 mm **SKE 2.0**

80x180 - 32"x72"

NA064 TIBUR VENA 2.0

60x120 - 24"x48"

NA067 TIBUR VENA 2.0

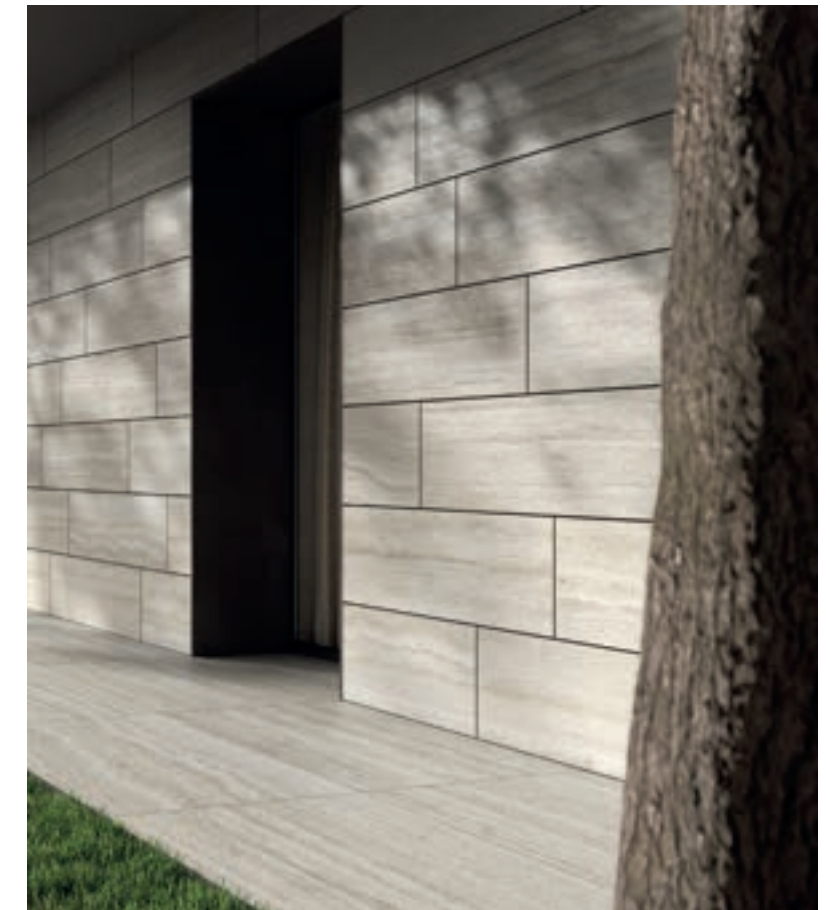
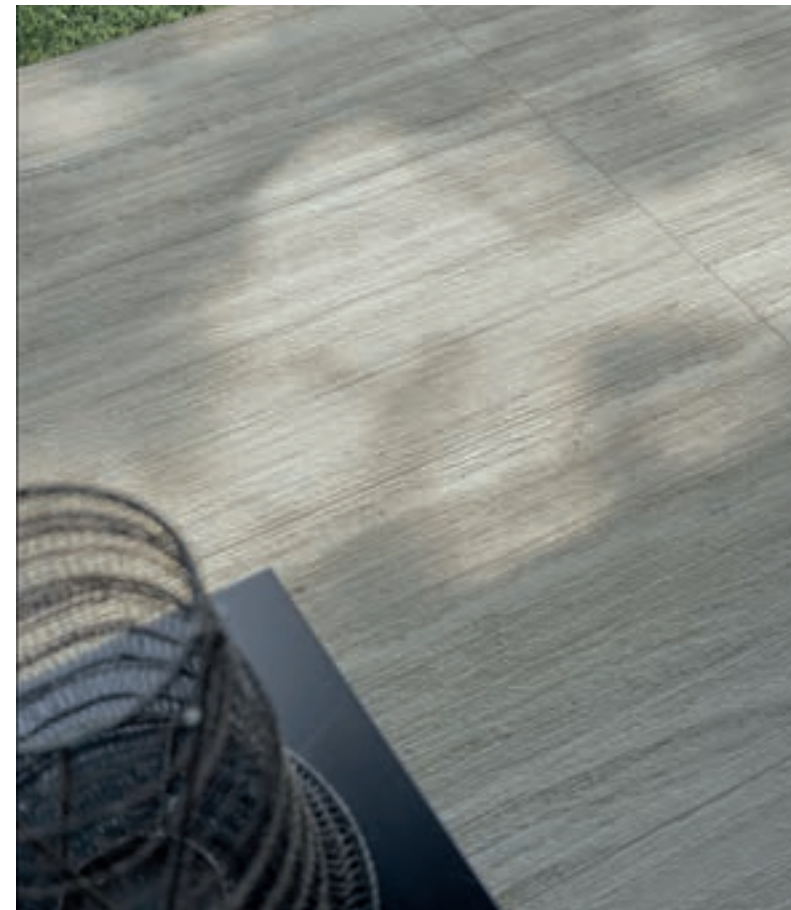
LAPILLO



≠ 9 mm **GRIP R11**

60x120 - 24"x48"

NA012 LAPILLO VENA GRIP





LUX VENA 2.0



AURUM VENA 2.0

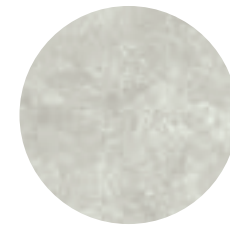


TIBUR VENA 2.0



NATIVA FALDA v3

LUX



≠ 9 mm **GRIP R11**

60x120 - 24"x48"

NA027 LUX FALDA GRIP

HERITAGE 60x120 - 24"x48"

NA054 LUX FALDA GRIP

≠ 20 mm **SKE 2.0**

60x120 - 24"x48"

NA072 LUX FALDA 2.0

HERITAGE 60x120 - 24"x48"

NA081 LUX FALDA 2.0

60x60 - 24"x24"

NA075 LUX FALDA 2.0

HERITAGE 60x60 - 24"x24"

NA084 LUX FALDA 2.0

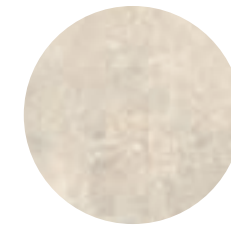
MODULO 120

NA078 LUX FALDA 2.0

HERITAGE MODULO 120

NA087 LUX FALDA 2.0

AURUM



≠ 9 mm **GRIP R11**

60x120 - 24"x48"

NA026 AURUM FALDA GRIP

HERITAGE 60x120 - 24"x48"

NA053 AURUM FALDA GRIP

≠ 20 mm **SKE 2.0**

60x120 - 24"x48"

NA071 AURUM FALDA 2.0

HERITAGE 60x120 - 24"x48"

NA080 AURUM FALDA 2.0

60x60 - 24"x24"

NA074 AURUM FALDA 2.0

HERITAGE 60x60 - 24"x24"

NA083 AURUM FALDA 2.0

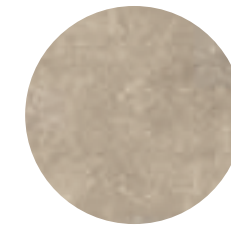
MODULO 120

NA077 AURUM FALDA 2.0

HERITAGE MODULO 120

NA086 AURUM FALDA 2.0

TIBUR



≠ 9 mm **GRIP R11**

60x120 - 24"x48"

NA025 TIBUR FALDA GRIP

HERITAGE 60x120 - 24"x48"

NA052 TIBUR FALDA GRIP

≠ 20 mm **SKE 2.0**

60x120 - 24"x48"

NA070 TIBUR FALDA 2.0

HERITAGE 60x120 - 24"x48"

NA079 TIBUR FALDA 2.0

60x60 - 24"x24"

NA073 TIBUR FALDA 2.0

HERITAGE 60x60 - 24"x24"

NA082 TIBUR FALDA 2.0

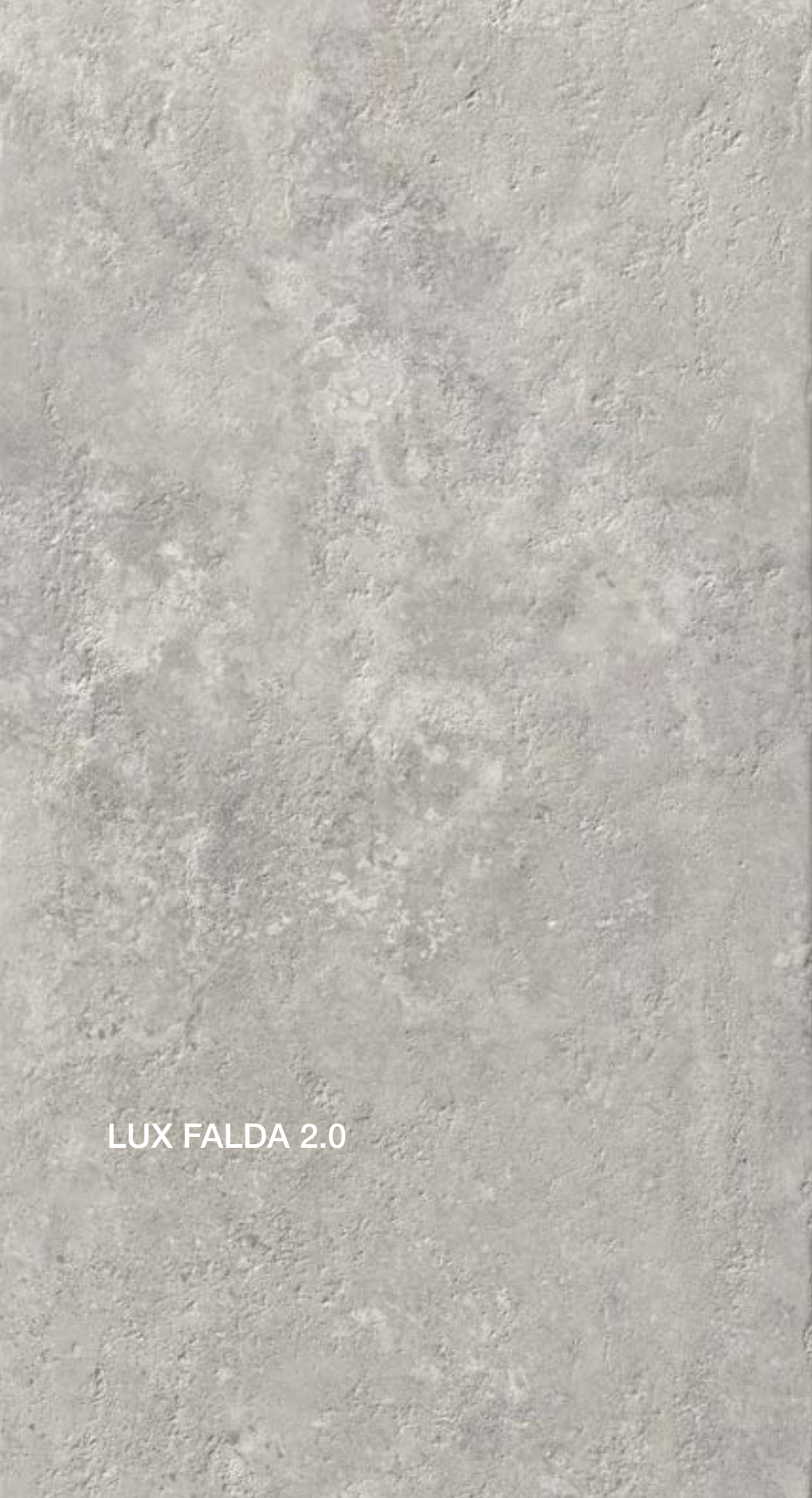
MODULO 120

NA076 TIBUR FALDA 2.0

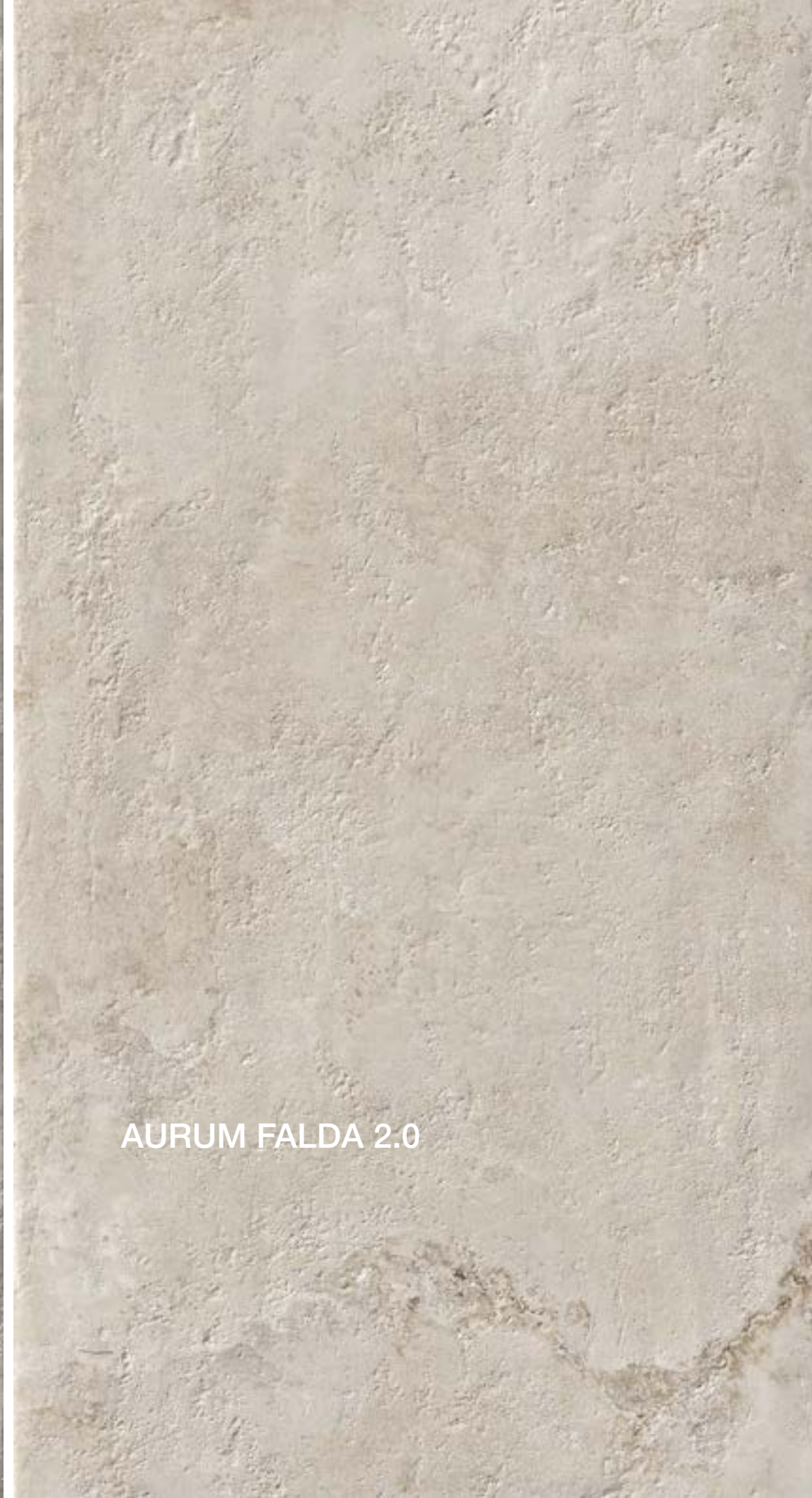
HERITAGE MODULO 120

NA085 TIBUR FALDA 2.0





LUX FALDA 2.0



AURUM FALDA 2.0

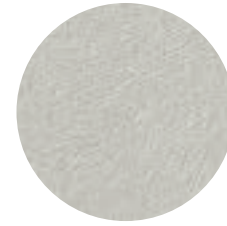


TIBUR FALDA 2.0



NATIVA ARMIS v3

LUX



≠ 20 mm SKE 2.0

80x180 - 32"x72"

NA090 LUX ARMIS 2.0

AURUM



≠ 20 mm SKE 2.0

80x180 - 32"x72"

NA089 AURUM ARMIS 2.0

TIBUR

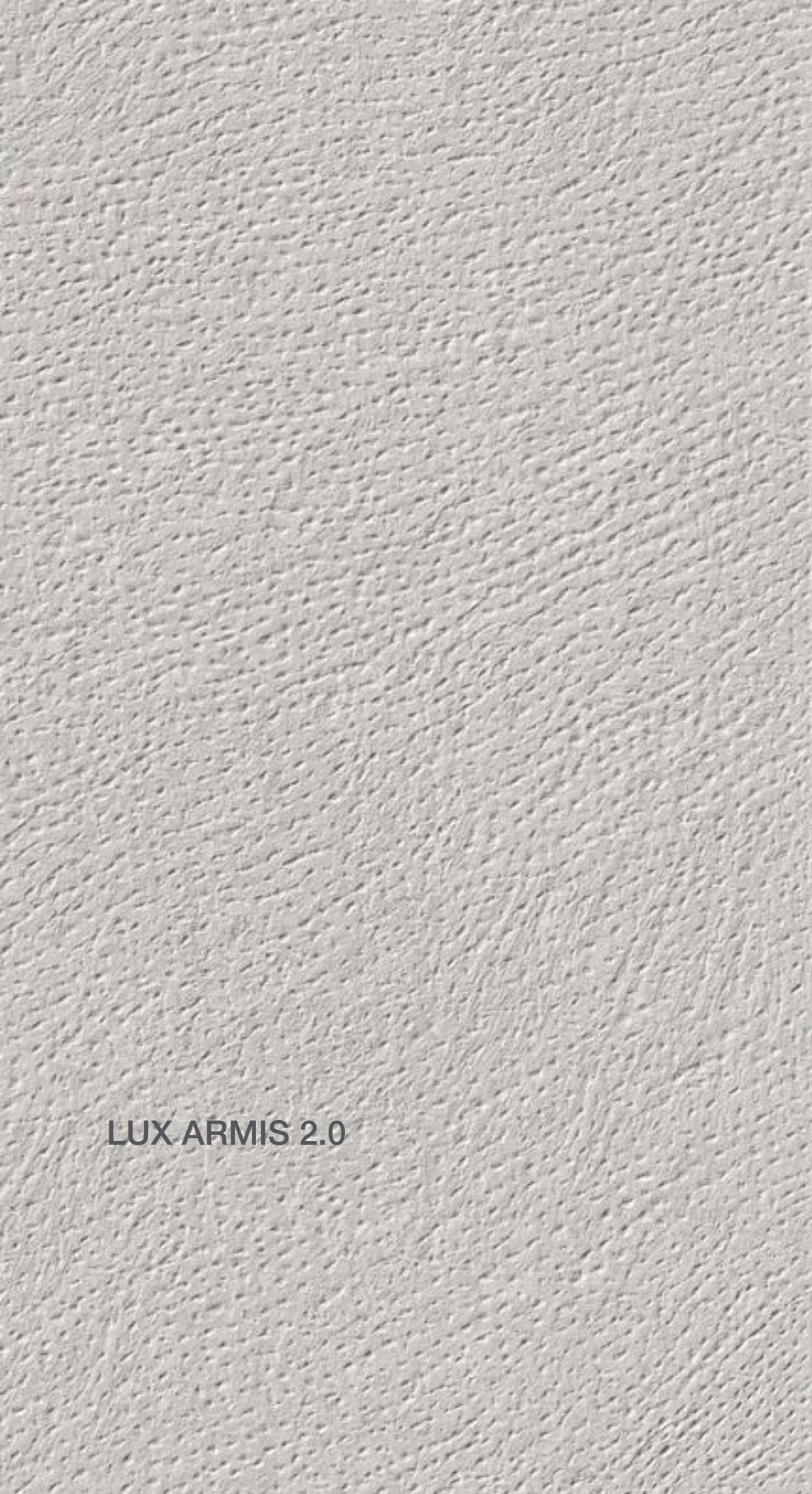


≠ 20 mm SKE 2.0

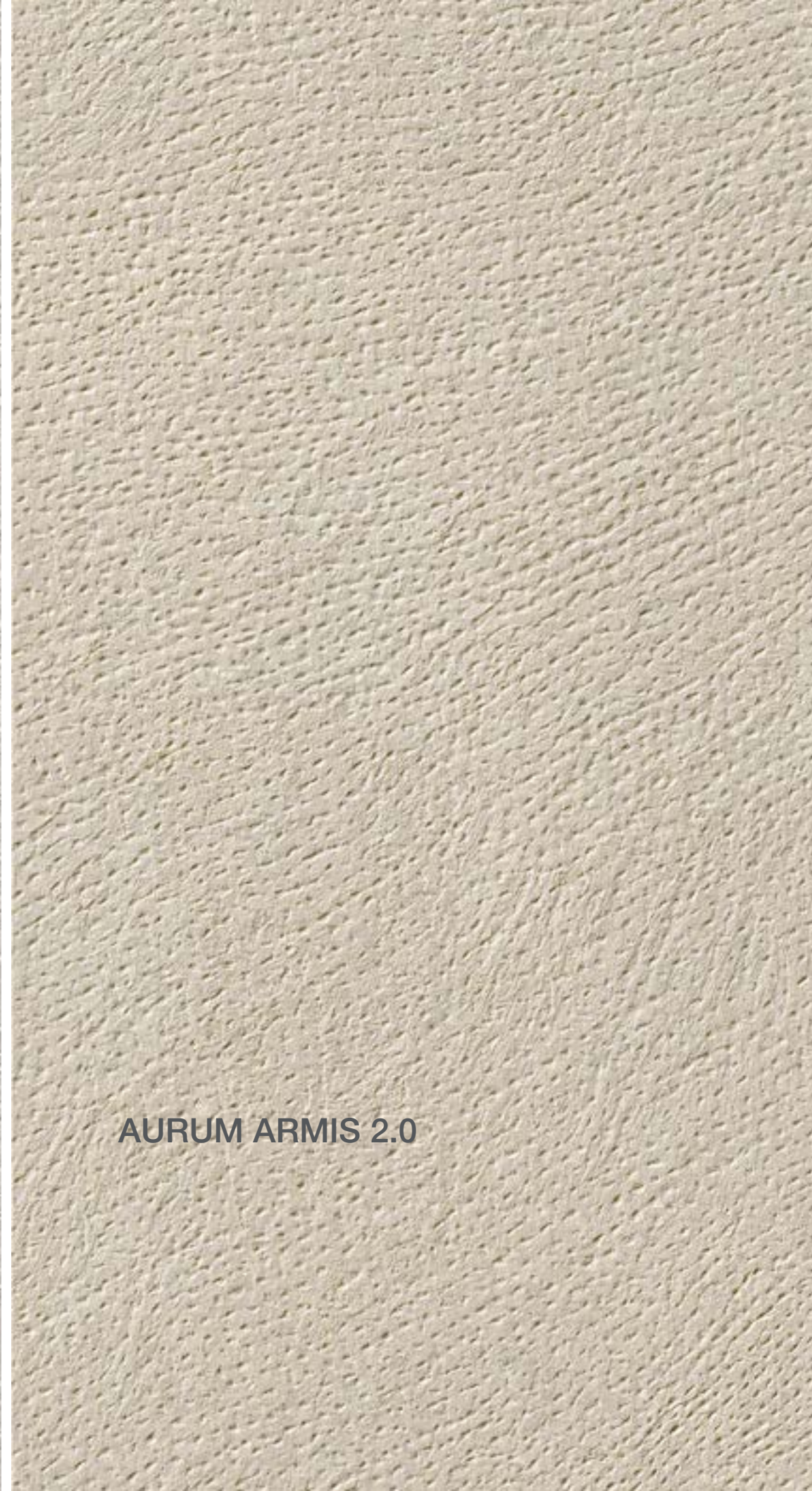
80x180 - 32"x72"

NA088 TIBUR ARMIS 2.0





LUX ARMIS 2.0



AURUM ARMIS 2.0



TIBUR ARMIS 2.0



LE REVERSE CARVED

OPAL



≠ 9 mm **GRIP R11**

60x120 - 24"x48"

RS036 OPAL GRIP

60x60 - 24"x24"

RS086 OPAL GRIP

40x80 - 16"x32"

RS076 OPAL GRIP

≠ 20 mm **SKE 2.0**

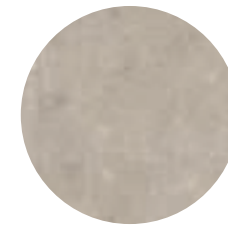
60x120 - 24"x48"

RS181 OPAL CARVED 2.0

60x60 - 24"x24"

RS176 OPAL CARVED 2.0

DUNE



≠ 9 mm **GRIP R11**

60x120 - 24"x48"

RS037 DUNE GRIP

60x60 - 24"x24"

RS087 DUNE GRIP

40x80 - 16"x32"

RS077 DUNE GRIP

≠ 20 mm **SKE 2.0**

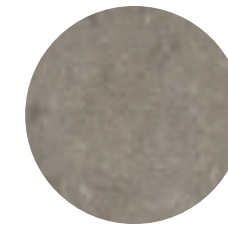
60x120 - 24"x48"

RS182 DUNE CARVED 2.0

60x60 - 24"x24"

RS177 DUNE CARVED 2.0

TAUPE



≠ 9 mm **GRIP R11**

60x120 - 24"x48"

RS038 TAUPE GRIP

60x60 - 24"x24"

RS088 TAUPE GRIP

40x80 - 16"x32"

RS078 TAUPE GRIP

≠ 20 mm **SKE 2.0**

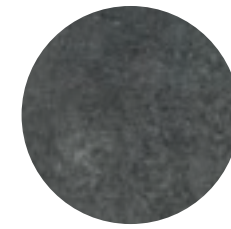
60x120 - 24"x48"

RS183 TAUPE CARVED 2.0

60x60 - 24"x24"

RS178 TAUPE CARVED 2.0

NUIT



≠ 9 mm **GRIP R11**

60x120 - 24"x48"

RS039 NUIT GRIP

60x60 - 24"x24"

RS089 NUIT GRIP

40x80 - 16"x32"

RS079 NUIT GRIP

≠ 20 mm **SKE 2.0**

80x180 - 32"x72"

8039 NUIT CARVED 2.0

60x120 - 24"x48"

RS184 NUIT CARVED 2.0

60x60 - 24"x24"

RS179 NUIT CARVED 2.0





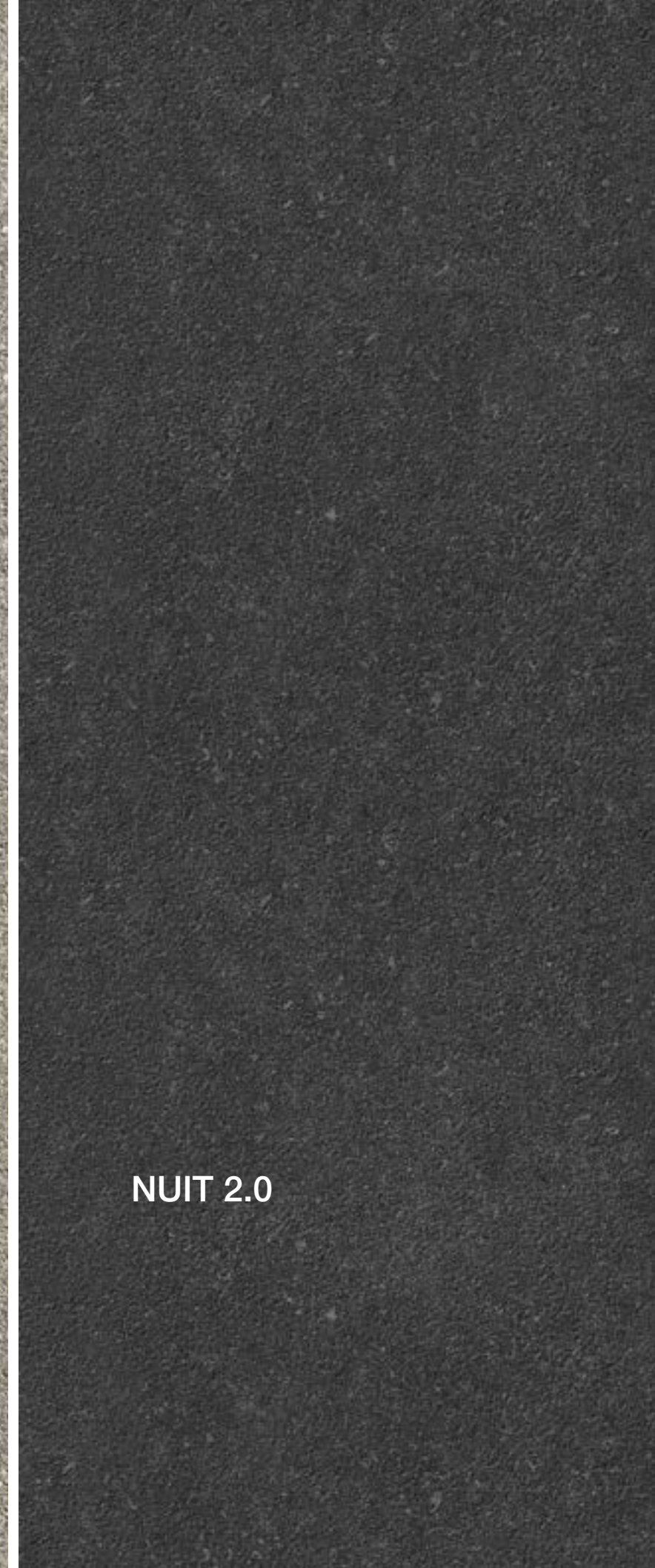
OPAL 2.0



DUNE 2.0



TAUPE 2.0



NUIT 2.0

PIASENTINA STONE v3

FLAMED



≠ 9 mm **GRIP R11**

- 80x180** - 32"x72"
- PS014 FLAMED GRIP
- 60x120** - 24"x48"
- PS016 FLAMED GRIP
- 40x80** - 16"x32"
- PS015 FLAMED GRIP

≠ 20 mm **SKE 2.0**

- 80x180** - 32"x72"
- PS010 FLAMED 2.0
- 60x120** - 24"x48"
- PS011 FLAMED 2.0
- 40x120** - 16"x48"
- PS017 FLAMED 2.0
- 40x180** - 16"x72"
- PS012 FLAMED 2.0
- 60x60** - 24"x24"
- PS013 FLAMED 2.0
- 40x60** - 16"x24"
- PS018 FLAMED 2.0





FLAMED 2.0



FLAMED 2.0



FLAMED 2.0

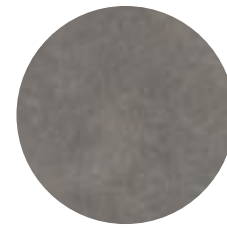


ROCKS



PORFIDO

SILVER BLACK



≠ 9 mm GRIP R11

≠ 9 mm GRIP R11

80x180 - 32"x72"

60x120 - 24"x48"

7481 PORFIDO GRIP

7431 SILVER BLACK GRIP

60x120 - 24"x48"

30x60 - 12"x24"

7483 PORFIDO GRIP

7426 SILVER BLACK GRIP

40x80 - 24"x48"

7486 PORFIDO GRIP

≠ 20 mm SKE 2.0

≠ 20 mm SKE 2.0

80x180 - 32"x72"

60x120 - 24"x48"

8037 PORFIDO 2.0

7366 SILVER BLACK 2.0

40x120 - 16"x48"

60x60 - 24"x24"

8097 PORFIDO 2.0

7361 SILVER BLACK 2.0





PORFIDO 2.0

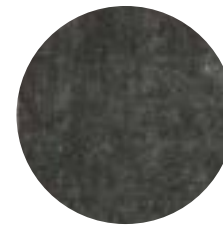


SILVER BLACK 2.0



CARRIERE DU KRONOS ANTICATO

NAMUR



≠ 9 mm **GRIP R11**

60x60 - 24"x24"

8508 NAMUR GRIP

≠ 20 mm **SKE 2.0**

60x60 - 24"x24"

8355 NAMUR 2.0

GENT



≠ 9 mm **GRIP R11**

60x60 - 24"x24"

8509 NAMUR GRIP

≠ 20 mm **SKE 2.0**

60x60 - 24"x24"

8356 GENT 2.0

BRUGES



≠ 9 mm **GRIP R11**

60x60 - 24"x24"

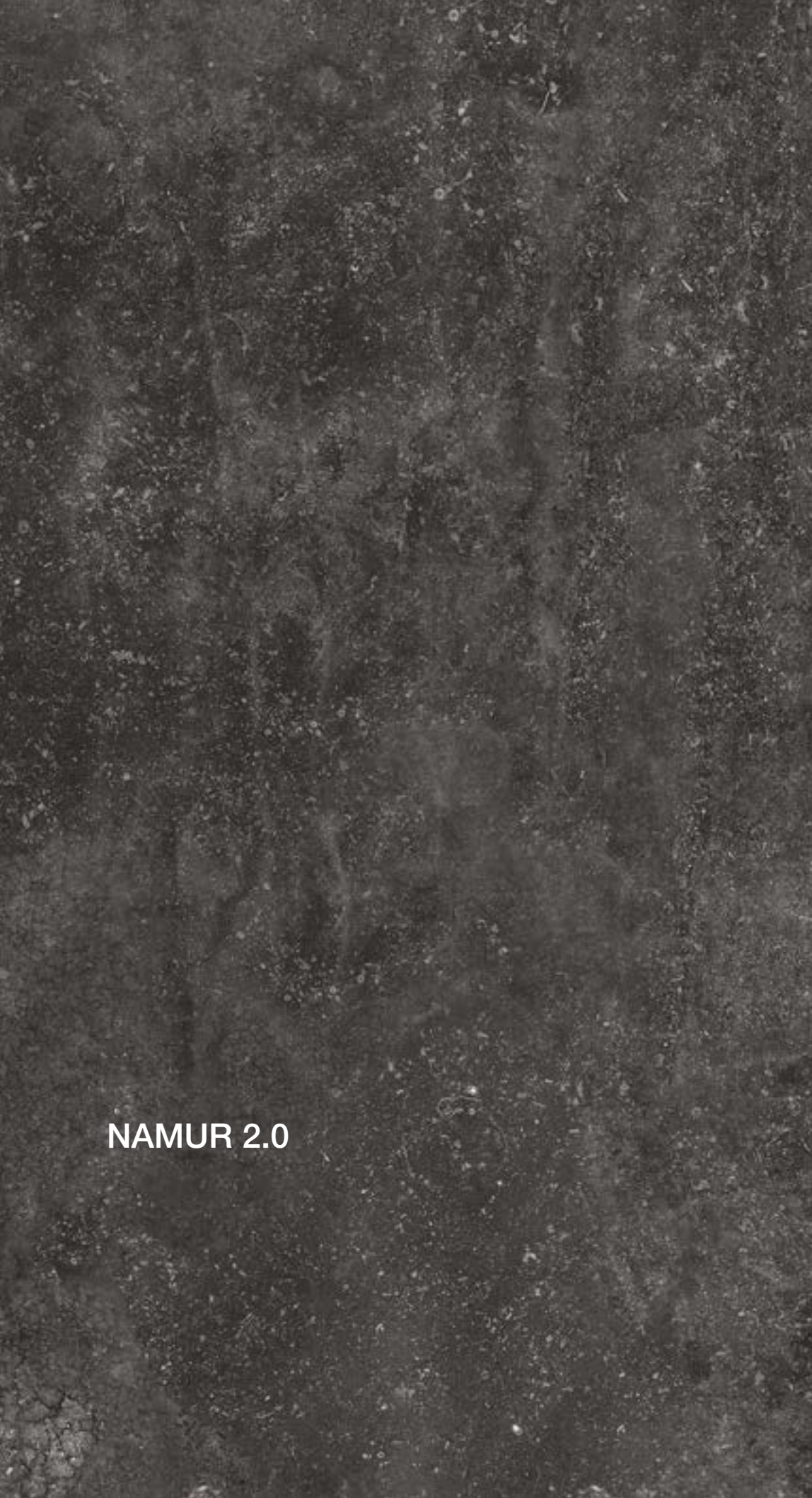
8511 BRUGES GRIP

≠ 20 mm **SKE 2.0**

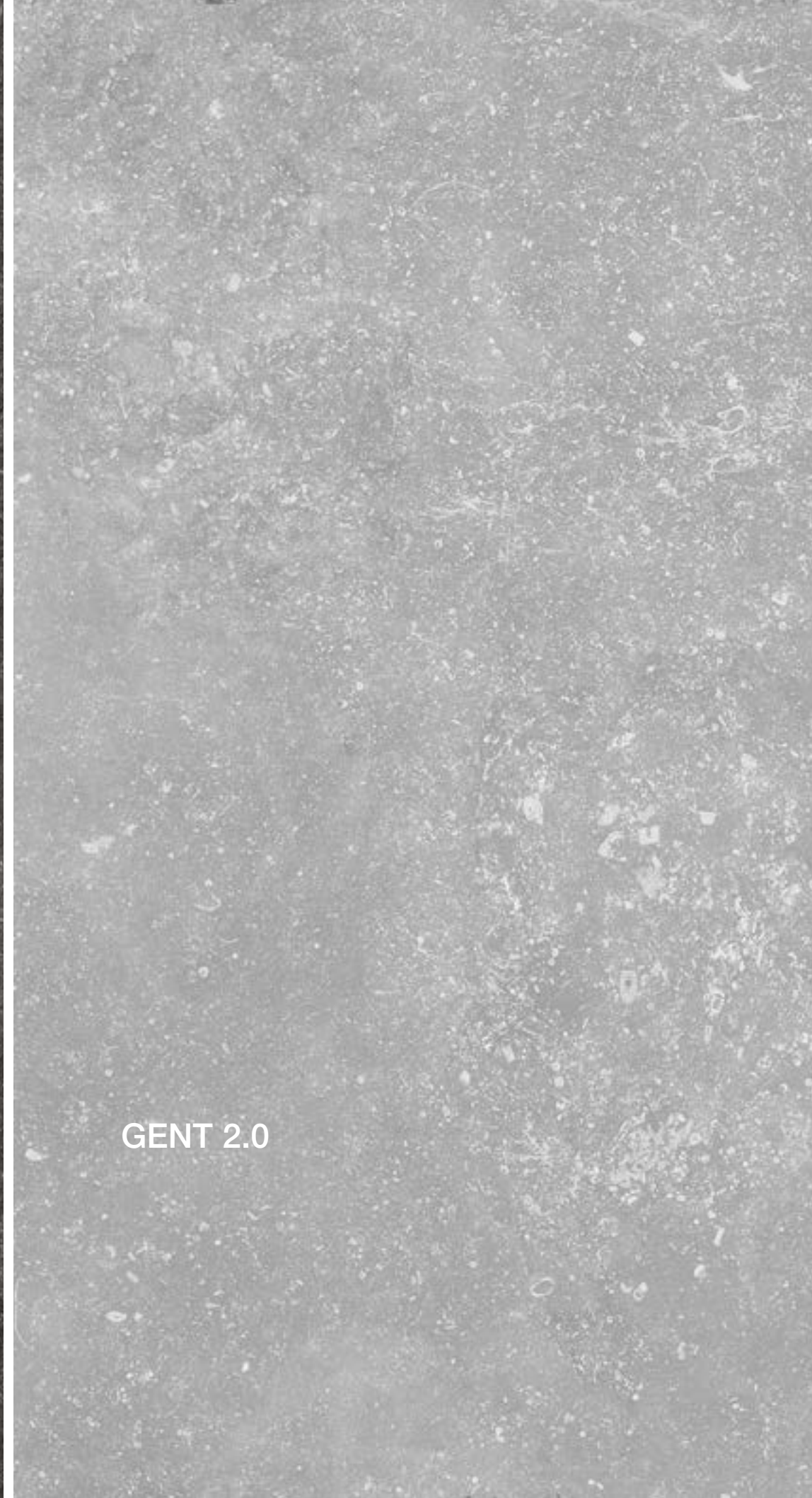
60x60 - 24"x24"

8357 BRUGES 2.0





NAMUR 2.0



GENT 2.0

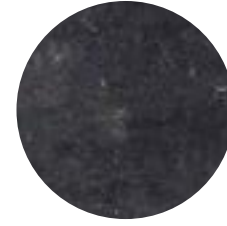


BRUGES 2.0



EVOLUTION v3

NOIR

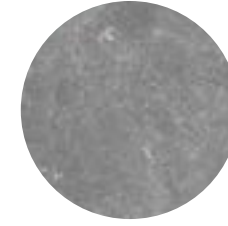


≠ 20 mm SKE 2.0

100x100 - 40"x40"

EV010 EVO NOIR 2.0

GRIS FONCE



≠ 20 mm SKE 2.0

100x100 - 40"x40"

EV011 EVO GRIS FONCE 2.0

GREYGE



≠ 20 mm SKE 2.0

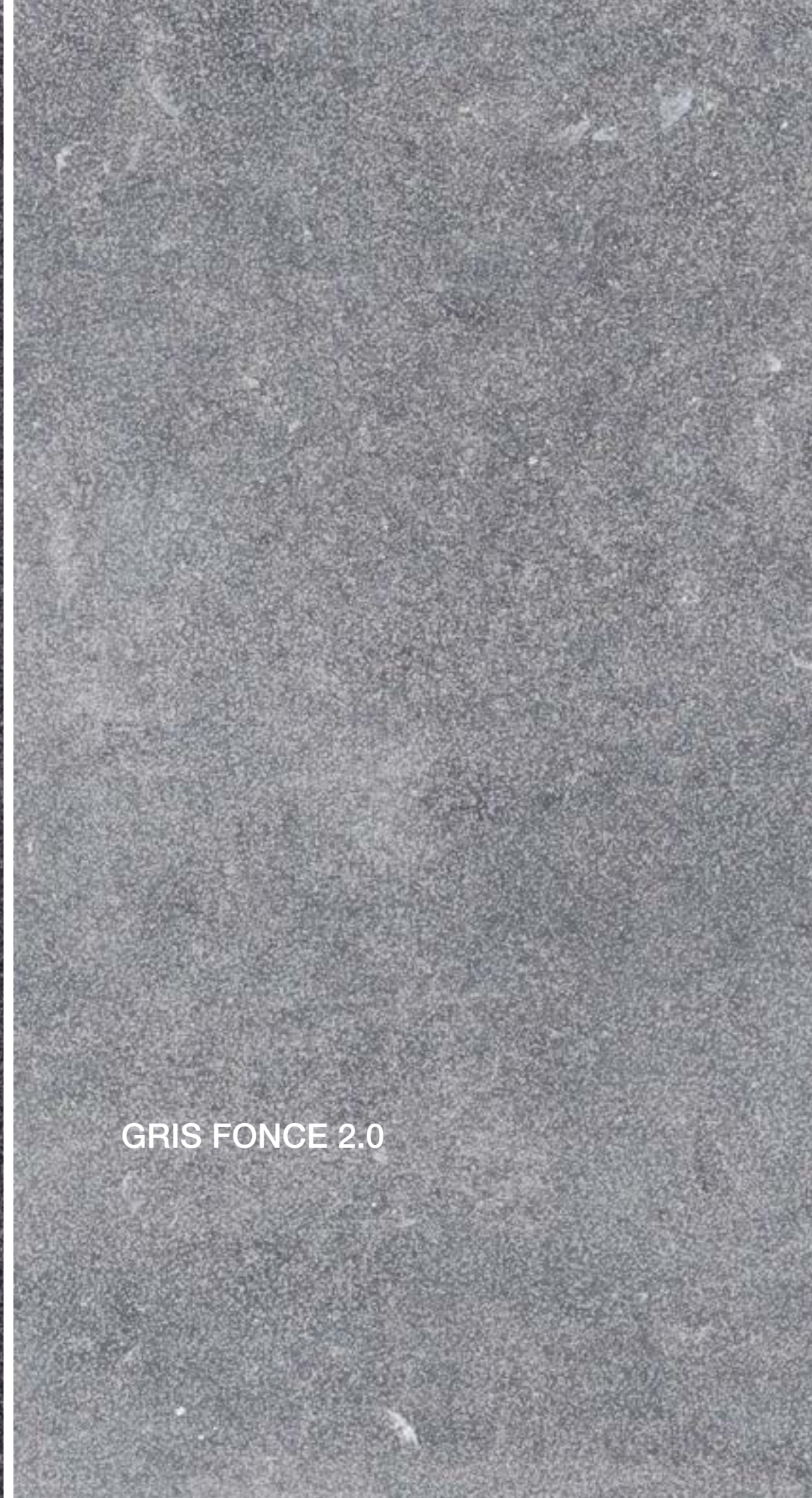
100x100 - 40"x40"

EV012 EVO GREYGE 2.0





NOIR 2.0



GRIS FONCE 2.0

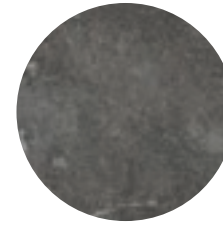


GREYGE 2.0



BLOCK

NAMUR



≠ 18 mm

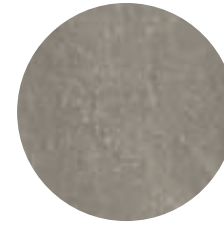
20,2x20,2 - 8"x8"

BL001 NAMUR 1.8

20,2x30,4 - 8"x12"

BL051 NAMUR 1.8

GENT



≠ 18 mm

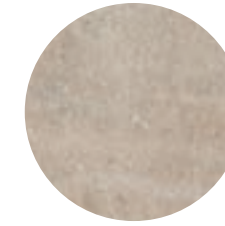
20,2x20,2 - 8"x8"

BL002 GENT 1.8

20,2x30,4 - 8"x12"

BL052 GENT 1.8

BRUGES



≠ 18 mm

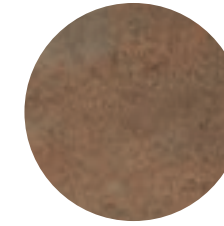
20,2x20,2 - 8"x8"

BL003 BRUGES 1.8

20,2x30,4 - 8"x12"

BL053 BRUGES 1.8

COTTO



≠ 18 mm

20,2x20,2 - 8"x8"

BL004 COTTO 1.8

20,2x30,4 - 8"x12"

BL054 COTTO 1.8

PORFIDO



≠ 18 mm

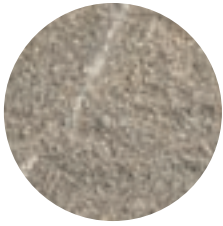
20,2x20,2 - 8"x8"

BL005 PORFIDO 1.8

20,2x30,4 - 8"x12"

BL055 PORFIDO 1.8

FLAMED



≠ 18 mm

20,2x20,2 - 8"x8"

BL006 FLAMED 1.8

20,2x30,4 - 8"x12"

BL056 FLAMED 1.8





NAMUR 1.8



GENT 1.8



BRUGES 1.8



COTTO 1.8



PORFIDO 1.8



FLAMED 1.8

outdoor tiles

CONCRETE

MATERIA



GESO



CEMENTO



SANDALO



SETA



CENERE



TORTORA

TERRA CREA



CALCE



CORDA



LIMO



POMICE



MATTONE

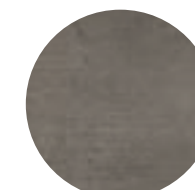
PRIMA MATERIA



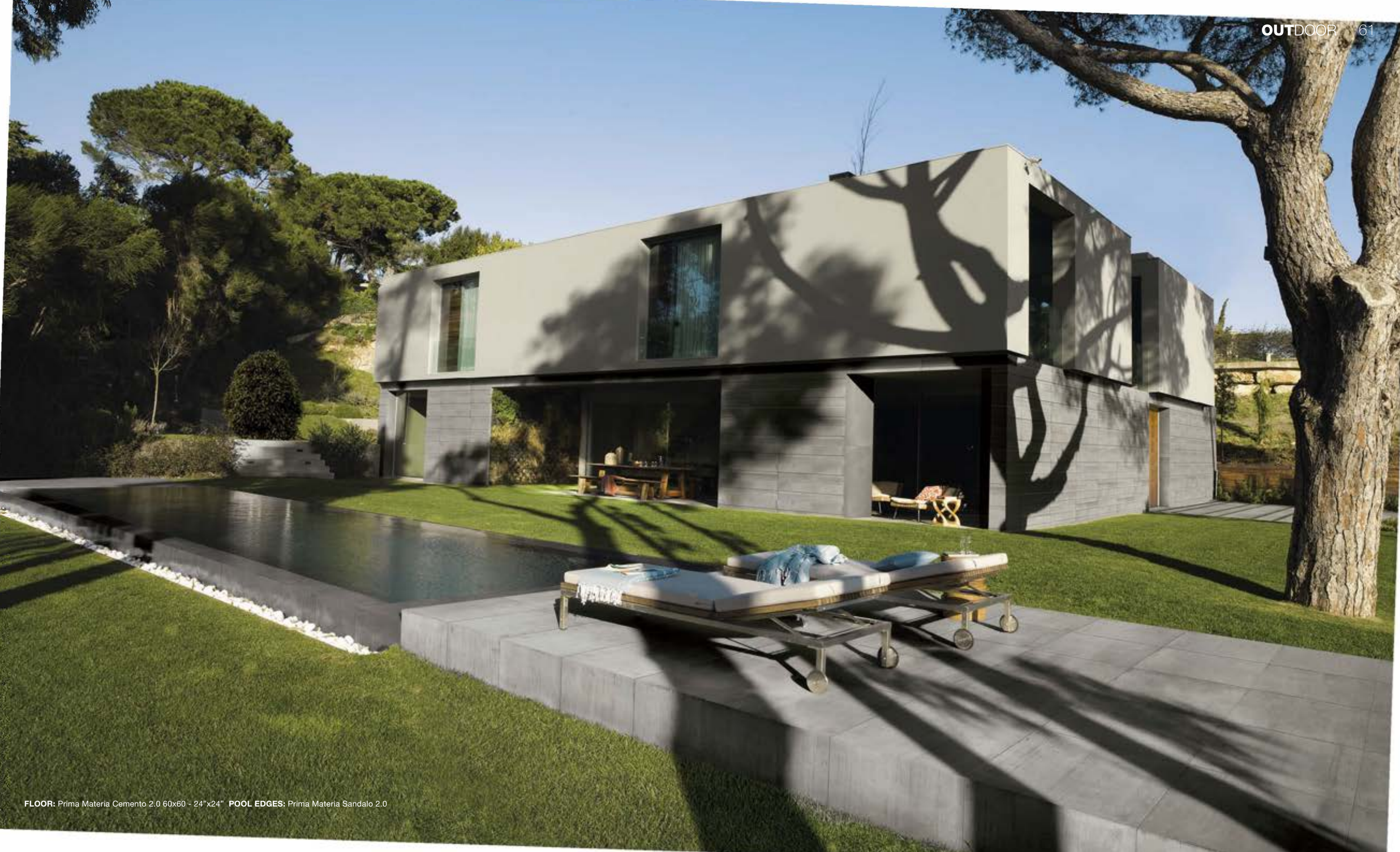
CEMENTO



CENERE



SANDALO





FLOOR:TERRA CREA Corda 80x80 - 32"x32"



FLOOR:TERRA CREA Corda 80x80 - 32"x32"



FLOOR: MATERIA Tortora 2.0 120x120 - 48"x48" POOL: MATERIA Tortora
LOUNGER BASES: ESSENCE Ambre TABLES: MATERIA Cenere



MATERIA v2

GESSO



≠ 9 mm GRIP R11

120x120 - 48"x48"

MA070 GESSO GRIP

60x120 - 24"x48"

MA088 GESSO GRIP

80x80 - 32"x32"

MA058 GESSO GRIP

≠ 20 mm SKE 2.0

120x120 - 48"x48"

MA082 GESSO

60x120 - 24"x48"

MA037 GESSO

CEMENTO



≠ 9 mm GRIP R11

120x120 - 48"x48"

MA072 CEMENTO GRIP

60x120 - 24"x48"

MA090 CEMENTO GRIP

80x80 - 32"x32"

MA060 CEMENTO GRIP

≠ 20 mm SKE 2.0

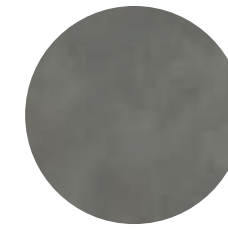
120x120 - 48"x48"

MA084 CEMENTO

60x120 - 24"x48"

MA039 CEMENTO

SANDALO



≠ 9 mm GRIP R11

120x120 - 48"x48"

MA074 SANDALO GRIP

60x120 - 24"x48"

MA092 SANDALO GRIP

80x80 - 32"x32"

MA062 SANDALO GRIP

≠ 20 mm SKE 2.0

120x120 - 48"x48"

MA086 SANDALO

60x120 - 24"x48"

MA041 SANDALO



GESSO 2.0

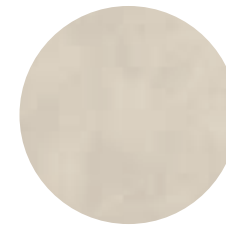
CEMENTO 2.0

SANDALO 2.0



MATERIA v2

SETA



≠ 9 mm **GRIP R11**

120x120 - 48"x48"

MA071 SETA GRIP

60x120 - 24"x48"

MA089 SETA GRIP

80x80 - 32"x32"

MA059 SETA GRIP

≠ 20 mm **SKE 2.0**

120x120 - 48"x48"

MA083 SETA

60x120 - 24"x48"

MA038 SETA

CENERE



≠ 9 mm **GRIP R11**

120x120 - 48"x48"

MA073 CENERE GRIP

60x120 - 24"x48"

MA091 CENERE GRIP

80x80 - 32"x32"

MA061 CENERE GRIP

≠ 20 mm **SKE 2.0**

120x120 - 48"x48"

MA085 CENERE

60x120 - 24"x48"

MA040 CENERE

TORTORA



≠ 9 mm **GRIP R11**

120x120 - 48"x48"

MA075 TORTORA GRIP

60x120 - 24"x48"

MA093 TORTORA GRIP

80x80 - 32"x32"

MA063 TORTORA GRIP

≠ 20 mm **SKE 2.0**

120x120 - 48"x48"

MA087 TORTORA

60x120 - 24"x48"

MA042 TORTORA



SETA 2.0

CENERE 2.0

TORTORA 2.0



TERRA CREA v3

CALCE



≠ 9 mm RUDE R11

80x180 - 32"x72"

TE071 CALCE RUDE

80x80 - 32"x32"

TE061 CALCE RUDE

60x120 - 24"x48"

TE066 CALCE RUDE

60x60 - 24"x24"

TE031 CALCE RUDE

≠ 20 mm SKE 2.0

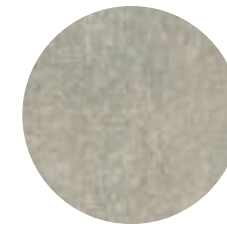
60x120 - 24"x48"

TE051 CALCE 2.0

60x60 - 24"x24"

TE046 CALCE 2.0

CORDA



≠ 9 mm RUDE R11

80x180 - 32"x72"

TE073 CORDA RUDE

80x80 - 32"x32"

TE063 CORDA RUDE

60x120 - 24"x48"

TE068 CORDA RUDE

60x60 - 24"x24"

TE033 CORDA RUDE

≠ 20 mm SKE 2.0

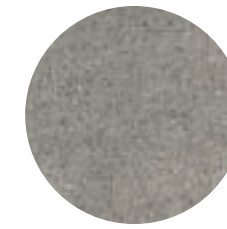
60x120 - 24"x48"

TE053 CORDA 2.0

60x60 - 24"x24"

TE048 CORDA 2.0

LIMO



≠ 9 mm RUDE R11

80x180 - 32"x72"

TE072 LIMO RUDE

80x80 - 32"x32"

TE062 LIMO RUDE

60x120 - 24"x48"

TE067 LIMO RUDE

60x60 - 24"x24"

TE032 LIMO RUDE

≠ 20 mm SKE 2.0

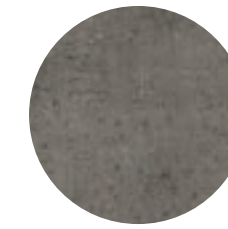
60x120 - 24"x48"

TE052 LIMO 2.0

60x60 - 24"x24"

TE047 LIMO 2.0

POMICE



≠ 9 mm RUDE R11

80x180 - 32"x72"

TE075 POMICE RUDE

80x80 - 32"x32"

TE065 POMICE RUDE

60x120 - 24"x48"

TE070 POMICE RUDE

60x60 - 24"x24"

TE035 POMICE RUDE

≠ 20 mm SKE 2.0

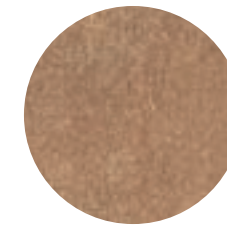
60x120 - 24"x48"

TE055 POMICE 2.0

60x60 - 24"x24"

TE050 POMICE 2.0

MATTONE



≠ 9 mm RUDE R11

80x180 - 32"x72"

TE074 MATTONE RUDE

80x80 - 32"x32"

TE064 MATTONE RUDE

60x120 - 24"x48"

TE069 MATTONE RUDE

60x60 - 24"x24"

TE034 MATTONE RUDE

≠ 20 mm SKE 2.0

60x120 - 24"x48"

TE054 MATTONE 2.0

60x60 - 24"x24"

TE049 MATTONE 2.0





CALCE 2.0



CORDA 2.0



LIMO 2.0



POMICE 2.0

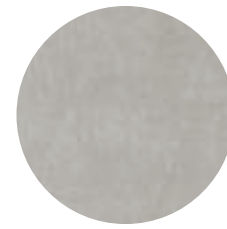


MATTONE 2.0



PRIMA MATERIA

CEMENTO



≠ 9 mm **GRIP R11**

60x120 - 24"x48"

8155 CEMENTO GRIP

40x80 - 16"x32"

8135 CEMENTO GRIP

60x60 - 24"x24"

8241 CEMENTO GRIP

≠ 20 mm **SKE 2.0**

80x180 - 32"x72"

8038 CEMENTO 2.0

40x120 - 16"x48"

8095 CEMENTO 2.0

20x120 - 8"x48"

8090 CEMENTO 2.0

60x60 - 24"x24"

8062 CEMENTO 2.0

CENERE



≠ 9 mm **GRIP R11**

60x120 - 24"x48"

8156 CENERE GRIP

40x80 - 16"x32"

8136 CENERE GRIP

60x60 - 24"x24"

8242 CENERE GRIP

≠ 20 mm **SKE 2.0**

40x120 - 16"x48"

8096 CENERE 2.0

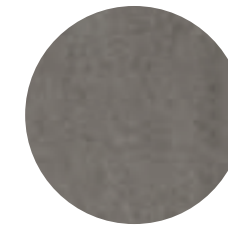
20x120 - 8"x48"

8091 CENERE 2.0

60x60 - 24"x24"

8063 CENERE 2.0

SANDALO



≠ 9 mm **GRIP R11**

60x120 - 24"x48"

8158 SANDALO GRIP

40x80 - 16"x32"

8138 SANDALO GRIP

60x60 - 24"x24"

8243 SANDALO GRIP

≠ 20 mm **SKE 2.0**

40x120 - 16"x48"

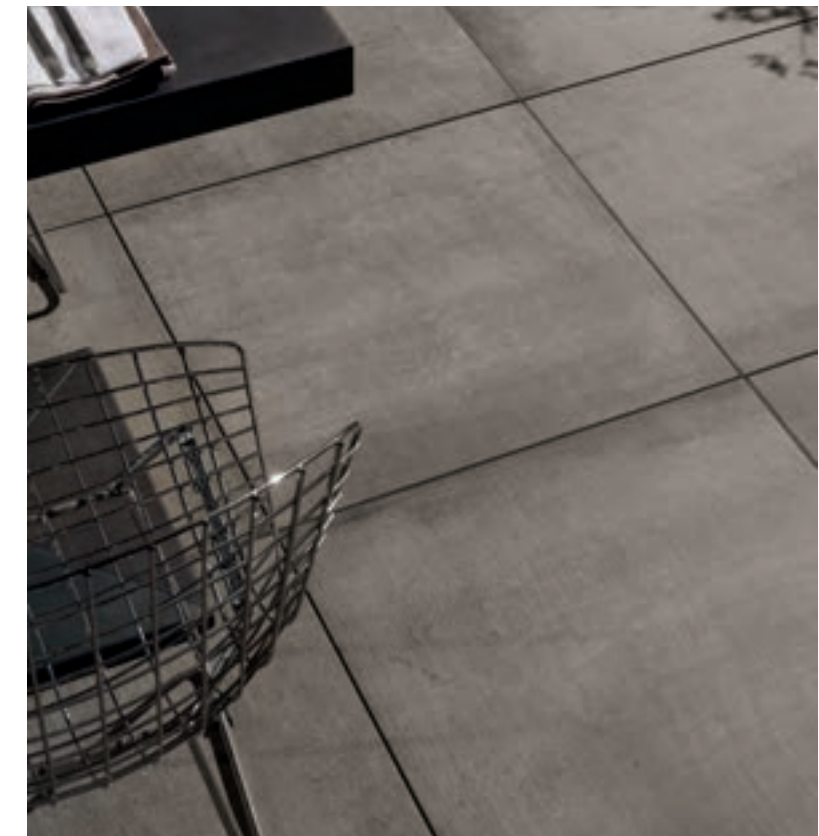
8098 SANDALO 2.0

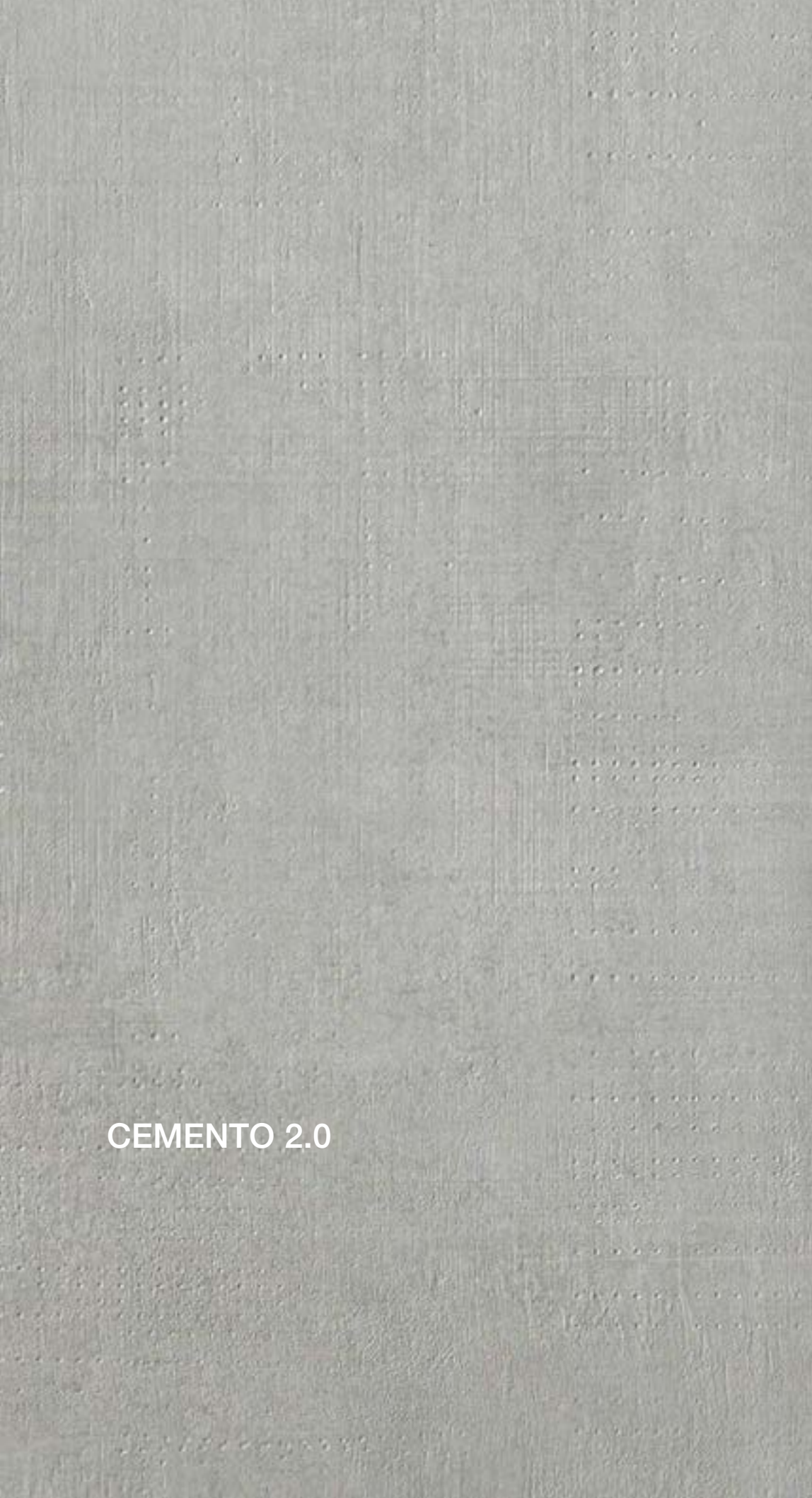
20x120 - 8"x48"

8093 SANDALO 2.0

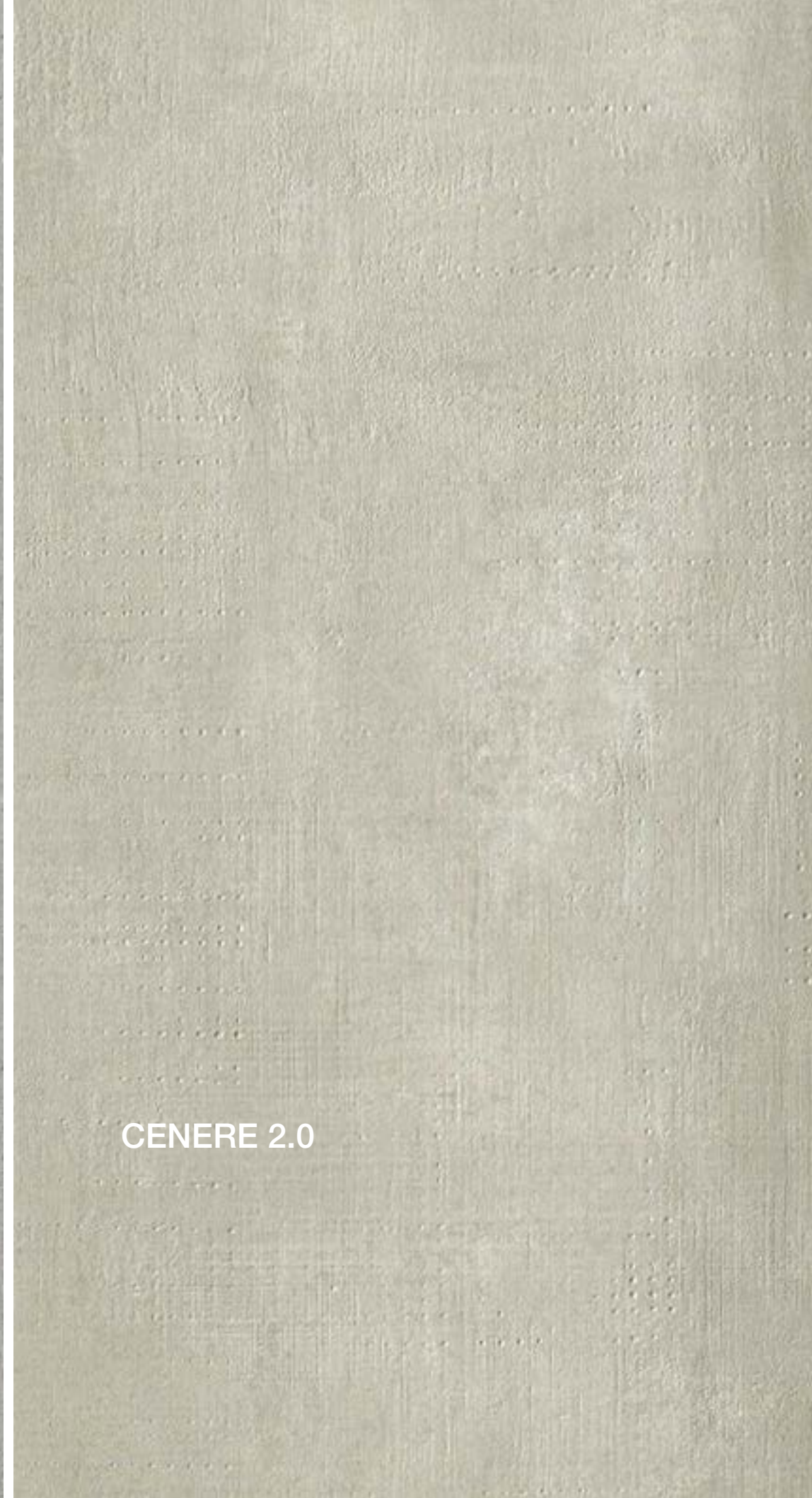
60x60 - 24"x24"

8064 SANDALO 2.0





CEMENTO 2.0



CENERE 2.0



SANDALO 2.0

outdoor tiles

WOOD

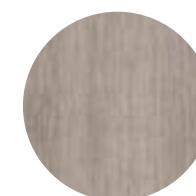
ESSENCE



PURE DECK

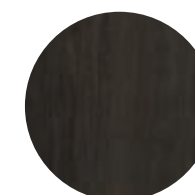


AMBRE DECK



MUSK DECK

LES BOIS

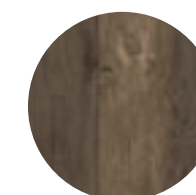


COBOLO

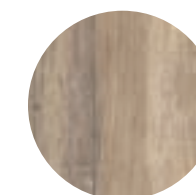


SLAVONIA

WOOD SIDE



NUT



OAK



WALL: ESSENCE Ambre 120x280 - 48"x112" / Plank Ambre 10x280 - 4"x112" / Trim Ambre 3x280 - 1½"x112" FLOOR: ESSENCE Ambre Deck 2.0 26,5x180 - 10½"x72"
MODULAR KITCHEN: NATIVA Vena Lux



FLOOR: ESSENCE Ambre Deck 2.0 26,5x180 - 10½"x72" **SWIMMING POOL:** NATIVA Falda Lux



WALL: MATERIA Tortora 120x280 - 48"x112" **FLOOR:** MATERIA Tortora 2.0 120x120 - 48"x48" / ESSENCE Ambre Deck 2.0 26,5x180 - 10½"x72"
HOT POOL: MATERIA Tortora **PLANTERS:** MATERIA Tortora 2.0



HOT TUB: LE REVERSE Taupe Elegance 120x280 - 48"x112" **OUTDOOR FLOOR:** WOOD SIDE Nut 2.0 26,5x180 - 10^{1/2}"x72"
PLANTERS: LE REVERSE Taupe Carved 2.0 60x120 - 24"x48" **PLANTER:** TERRA CREA Pomice 2.0 60x60 24"x24"



ESSENCE

PURE



≠ 9 mm **GRIP R11**

26,5x180 - 10½"x72"

ES025 PURE DECK

20x120 - 8"x48"

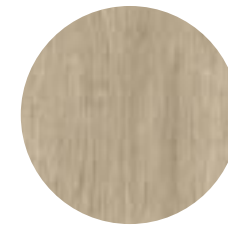
ES040 PURE DECK

≠ 20 mm **SKE 2.0**

26,5x180 - 10½"x72"

ES060 PURE DECK 2.0

AMBRE



≠ 9 mm **GRIP R11**

26,5x180 - 10½"x72"

ES026 AMBRE DECK

20x120 - 8"x48"

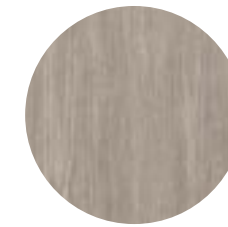
ES041 AMBRE DECK

≠ 20 mm **SKE 2.0**

26,5x180 - 10½"x72"

ES061 AMBRE DECK 2.0

MUSK



≠ 9 mm **GRIP R11**

26,5x180 - 10½"x72"

ES027 MUSK DECK

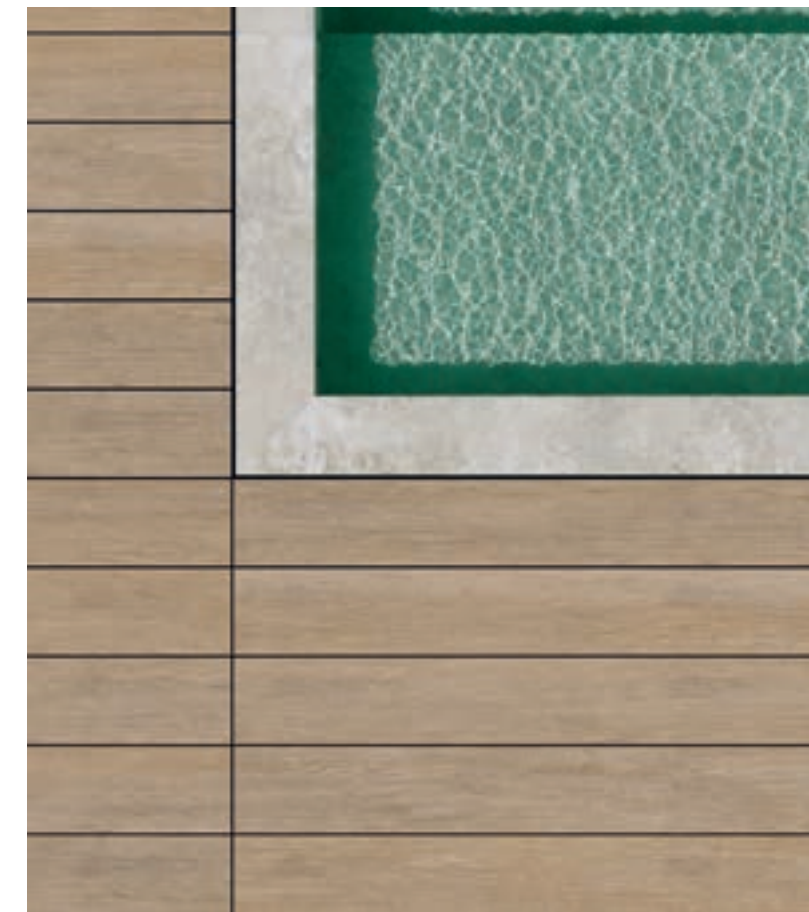
20x120 - 8"x48"

ES042 MUSK DECK

≠ 20 mm **SKE 2.0**

26,5x180 - 10½"x72"

ES062 MUSK DECK 2.0





PURE 2.0

AMBRE 2.0

MUSK 2.0



LES BOIS

SLAVONIA



≠ 20 mm SKE 2.0

40x120 - 16"x48"

LB081 SLAVONIA 2.0

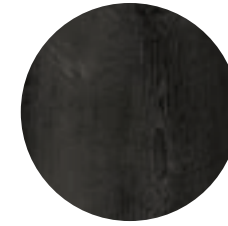
26,5x180 - 10½"x72"

8058 SLAVONIA 2.0

20x120 - 8"x48"

LB126 SLAVONIA 2.0

COBOLO



≠ 20 mm SKE 2.0

20x120 - 8"x48"

LB130 COBOLO 2.0





SLAVONIA 2.0



COBOLO 2.0



WOOD SIDE v3

OAK



≠ 9 mm **GRIP R11**

20x120 - 8"x48"

6591 OAK GRIP

≠ 20 mm **SKE 2.0**

26,5x180 - 10½"x72"

8054 OAK 2.0

20x120 - 8"x48"

6681 OAK 2.0

40x120 - 16"x48"

6651 OAK DOGA 2.0

NUT



≠ 9 mm **GRIP R11**

20x120 - 8"x48"

6593 NUT GRIP

≠ 20 mm **SKE 2.0**

26,5x180 - 10½"x72"

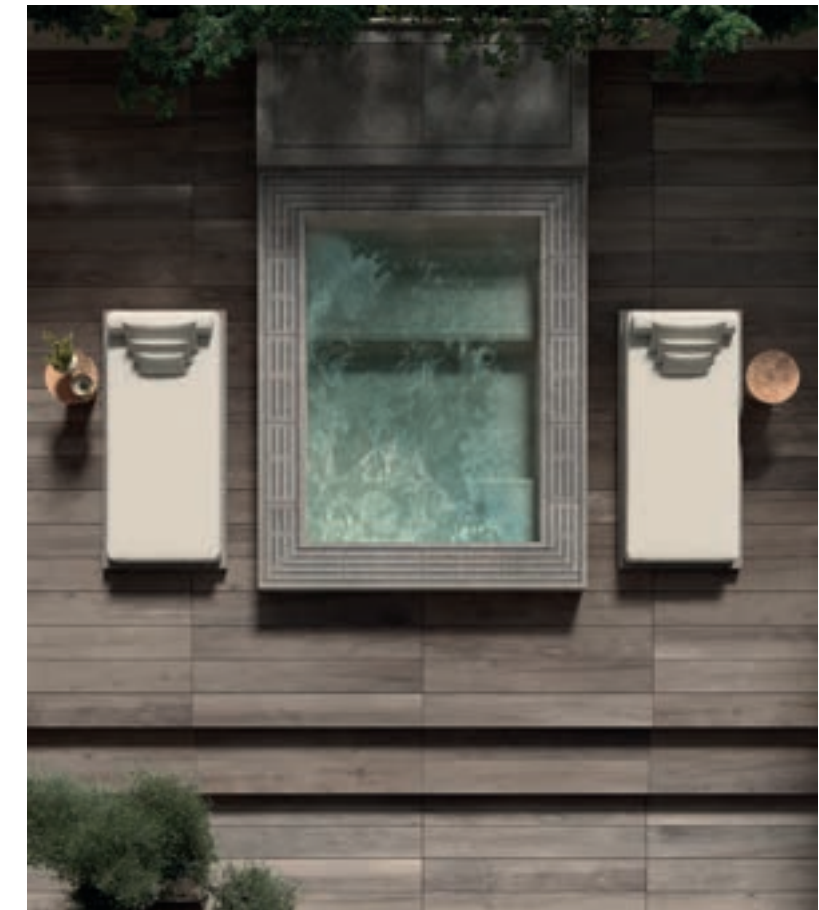
8055 NUT 2.0

20x120 - 8"x48"

6683 NUT 2.0

40x120 - 16"x48"

6653 NUT DOGA 2.0





OAK 2.0



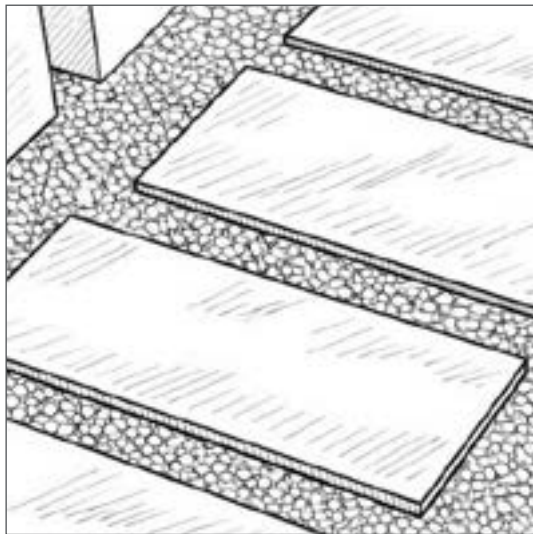
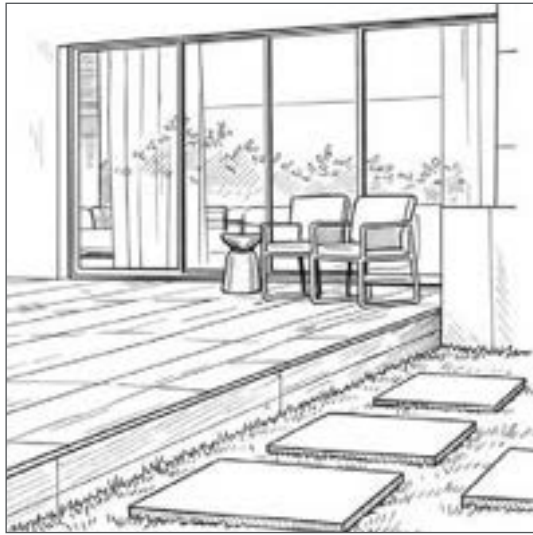
NUT 2.0

INSTALLATION

POSA DIRETTA SENZA COLLA

LAYING DIRECTLY WITHOUT ADHESIVE / AGGREGATE SET

CLICK



POSA A COLLA

LAYING WITH ADHESIVE / MORTAR SET

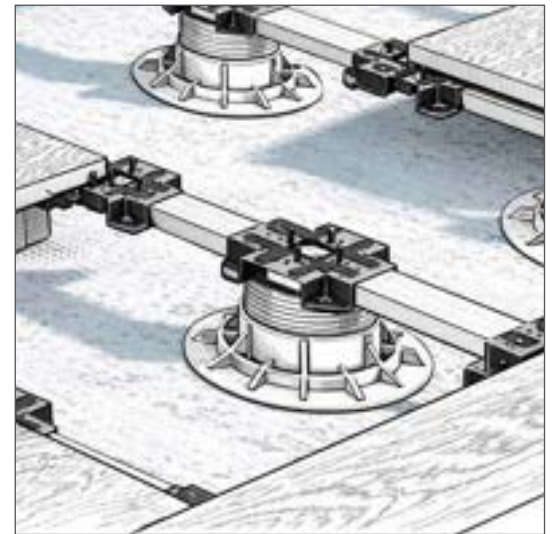
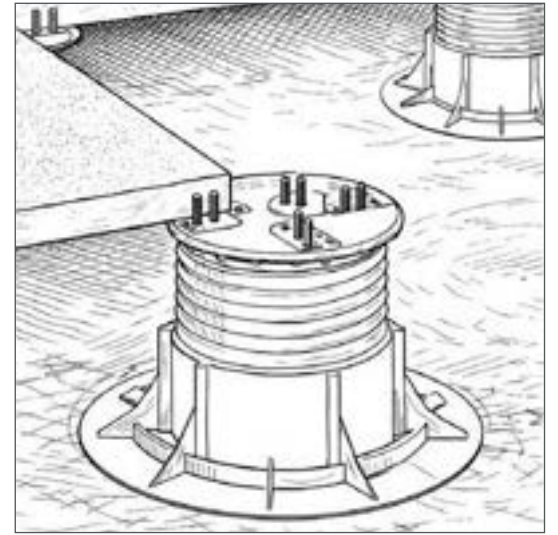
CLICK



SISTEMA DI POSA SOPRAELEVATA CON PIEDISTALLI

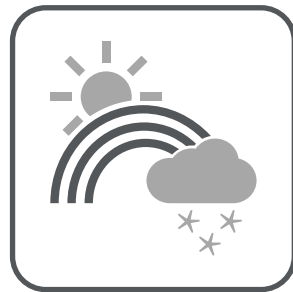
RAISED FLOOR WITH PEDESTAL SYSTEM

CLICK



Perché utilizzare le nostre piastrelle da esterno?

REASONS FOR USING OUR OUTDOOR TILES



Resistenza agli sbalzi termici.

Thermal shock resistance.



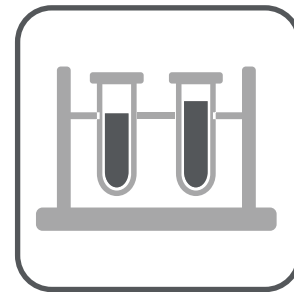
Resistenza al gelo.

Frost resistance.



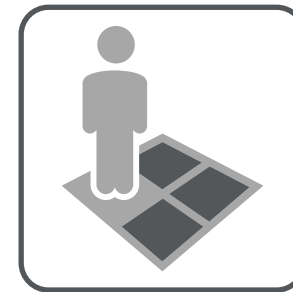
Resistenza al fuoco.

Fire resistance.



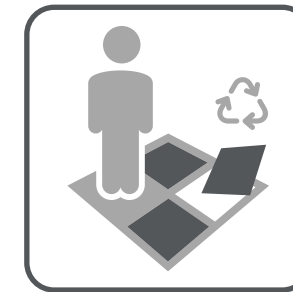
Resistenza alle macchie, acidi e prodotti chimici.

Resistant to stains, acid and chemicals.



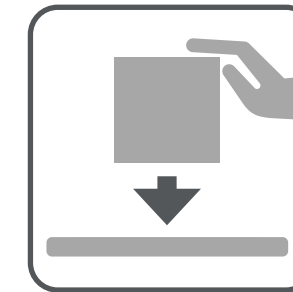
Facile da posare.

Easy to install.



Rimovibile e riutilizzabile.

Removable and reusable.



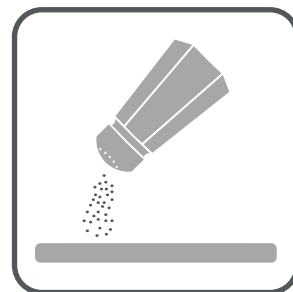
Installazione versatile. Varie possibilità di posa, quali sopraelevata, su erba, e su fondo morbido.

Versatile installation. Various installation methods including pedestal set, grass and gravel.



Nessuna manutenzione.

Virtually no maintenance.



Resistenza alla corrosione del sale.

Resistant to corrosion from salt.



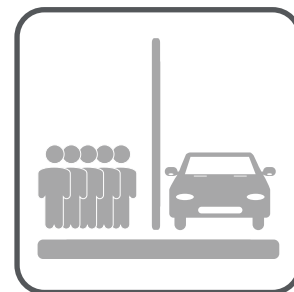
Resistenza alla muffa, muschio e trattamenti verdeggianti.

Resistant to attack from mould, moss and verdigris treatments.



Resistenza alla fioritura e all'insorgere di aloni.

Resistant to floescence and formation of dark halos.



Durevole: resistenza all'alto traffico pedonale e su ruota.

Durable: withstands heavy foot and wheel traffic.



Facile da pulire.

Easy to clean.



Resistenza allo scivolamento.

Slip resistance.



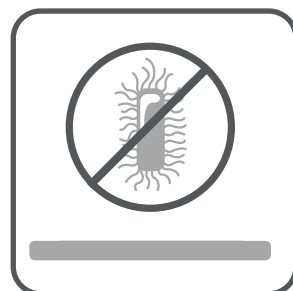
Utilizzo in contesti asciutti, bagnati e sommersi.

Dry, wet, and submerged applications.



Resistenza ai carichi di rottura.

High breaking load.



Ipoallergenico. Non rilascia inquinanti.

Hypoallergenic. No VOC.



Facile da sterilizzare.

Easy to sterilize.



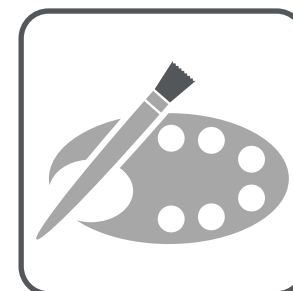
Manutenzione ecologica.

Eco-friendly maintenance.



Riciclabile ed ecologico.

Recyclable and ecological.



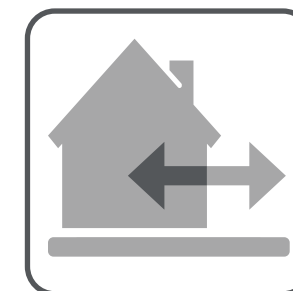
Colori inalterati nel tempo.

Colors remains unchanged over time.



Disponibile in un'ampia gamma di colori/finiture.

Available in a broad range of colors/styles.



Uso esterno + interni coordinati + pezzi speciali come bordi piscina e scalini.

Outdoor application + coordinated indoors + special pieces such as pool edges and steps.

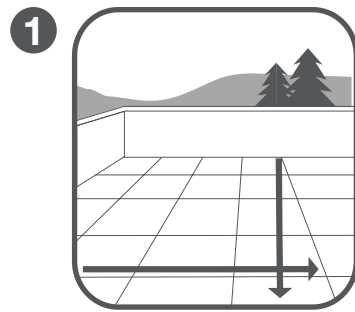


Importante risparmio grazie all'eccezionale ciclo di vita del prodotto.

Exceptional life cycle-cost = best value.

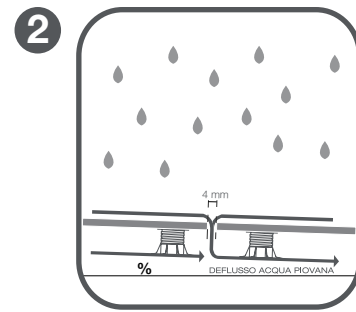
Perché scegliere la posa sopraelevata?

WHY CHOOSE RAISED FLOOR?



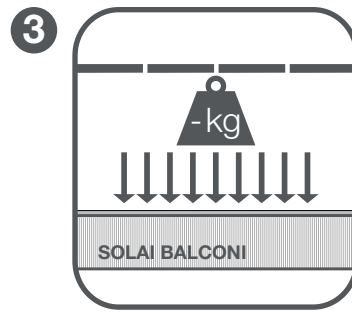
Dal punto di vista estetico, consente di ottenere pavimentazioni continue ad un'unica pendenza, senza corpi di recupero a vista per l'acqua (come griglie o scarichi).

From an aesthetic point of view, it allows for planar and uniform surfaces with no uneven levels or visible water drainage systems (grids or water discharge pipes).



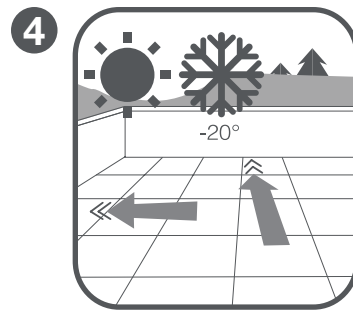
Il leggero spazio tra un pannello e l'altro consente un rapido e adeguato deflusso delle acque in eccesso. Facile da pulire. (Vedi pulizia e manutenzione / consigli di posa a pag. 102.)

The slight gap between gres slabs allows a quick water drainage. Easy to clean. (See cleaning and maintenance / laying instruction at page 102.)



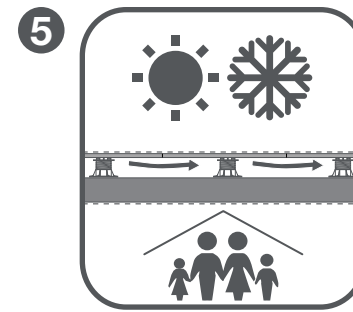
Minor carico su solai e balconi, evitando l'ultimo strato di caldana e colla.

Less load bearing in attics and on balconies as the last layer of concrete and glue is not necessary.



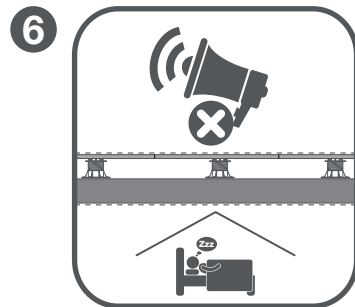
Ingelivo, assorbe le dilatazioni termiche della soletta, causa diretta dei cedimenti delle pavimentazioni esterne posate tradizionalmente.

Frost resistant, it absorbs the thermal expansions of the concrete substrate, the direct cause of traditional external flooring subsidences.



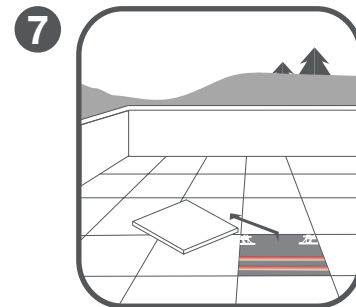
L'intercapedine tra pavimento e soletta favorisce il miglior isolamento termico.

The gap between the floor and the concrete substrate fosters thermal insulation.



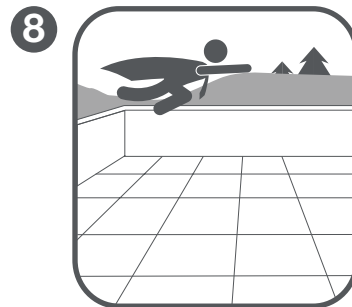
Favorisce l'isolamento acustico.

Best acoustic insulation.



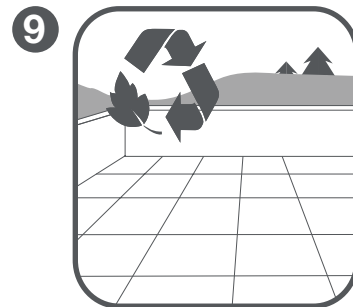
Tubazioni nascoste ma facilmente ispezionabili.

Hiding pipes but easy to inspect.



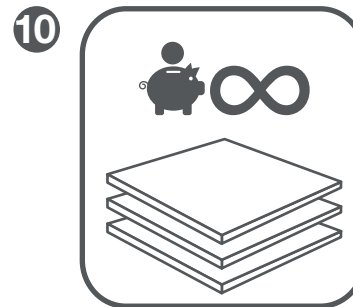
Velocità di posa.

Speed of installation.



Riciclabile.

Recyclable.



Garanzia di costi inferiori di posa e manutenzione, durata sostanzialmente eterna.

Value for money solution in terms of laying and maintenance, durable over time.



RANGE

FINITURA CEMENTO / CONCRETE EFFECT

	≠ 9 mm GRIP R11						≠ 20 mm SKE 2.0					
	120x120 48"x48"	80x180 32"x72"	60x120 24"x48"	80x80 32"x32"	60x60 24"x24"	40x80 16"x32"	120x120 48"x48"	80x180 32"x72"	60x120 24"x48"	40x120 16"x48"	20x120 8"x48"	60x60 24"x24"
MATERIA												
GESEO	•		•	•			•		•			
CEMENTO	•		•	•			•		•			
SANDALO	•		•	•			•		•			
SETA	•		•	•			•		•			
CENERE	•		•	•			•		•			
TORTORA	•		•	•			•		•			
PRIMA MATERIA												
CENERE			•		•	•		•		•	•	•
CEMENTO			•		•	•			•	•		•
SANDALO			•		•	•			•	•		•
TERRA CREA												
CALOE		•	•	•	•				•			•
CORDA		•	•	•	•				•			•
LIMO		•	•	•	•				•			•
POMICE		•	•	•	•				•			•
MATTONE		•	•	•	•				•			•

FINITURA LEGNO / WOOD EFFECT

	≠ 9 mm GRIP R11		≠ 20 mm SKE 2.0		
	26,5x180 10½"x72"	20x120 8"x48"	26,5x180 10½"x72"	40x120 16"x48"	20x120 8"x48"
ESSENCE					
PURE DECK	•	•	•		
AMBRE DECK	•	•	•		
MUST DECK	•	•	•		
LES BOIS					
COBOLO					•
SLAVONIA				•	•
WOOD SIDE					
NUT		•	•	•	•
OAK		•	•	•	•

FINITURA PIETRA / STONE EFFECT

	≠ 18 mm	
	20,2x20,2 8"x8"	20,2x30,4 8"x12"
BLOCK		
NAMUR	•	•
GENT	•	•
BRUGES	•	•
COTTO	•	•
PORFIDO	•	•
FLAMED	•	•

	≠ 9 mm GRIP R11						≠ 20 mm SKE 2.0								MODULO 120	100x100 40"x40"
	120x120 48"x48"	80x180 32"x72"	60x120 24"x48"	80x80 32"x32"	60x60 24"x24"	40x80 16"x32"	30x60 12"x24"	80x180 32"x72"	60x120 24"x48"	60x60 24"x24"	40x180 16"x72"	40x120 16"x48"	40x60 16"x24"			
PIERRE VIVE																
LOIRE NOBLE	•		•						•							
ORVAL NOBLE	•		•						•							
MORVAN NOBLE	•		•						•							
BRIONNE NOBLE	•		•						•							
LOIRE ANCIENNE			•	•	•	•			•	•						
ORVAL ANCIENNE			•	•	•	•			•	•						
MORVAN ANCIENNE			•	•	•	•			•	•						
BRIONNE ANCIENNE			•	•	•	•			•	•						
PIASENTINA																
FLAMED		•	•				•	•	•	•	•	•				
NATIVA																
LUX VENA			•				•	•								
AURUM VENA			•				•	•								
TIBUR VENA			•				•	•								
LAPILLO VENA			•													
LUX FALDA			•					•	•				•			
AURUM FALDA			•					•	•				•			
TIBUR FALDA			•					•	•				•			

	≠ 9 mm GRIP R11						≠ 20 mm SKE 2.0								MODULO 120	100x100 40"x40"
	120x120 48"x48"	80x180 32"x72"	60x120 24"x48"	80x80 32"x32"	60x60 24"x24"	40x80 16"x32"	30x60 12"x24"	80x180 32"x72"	60x120 24"x48"	60x60 24"x24"	40x180 16"x72"	40x120 16"x48"	40x60 16"x24"			
NATIVA																
LUX ARMIS								•								
AURUM ARMIS								•								
TIBUR ARMIS								•								
EVOLUTION DU KRONOS																
EVO NOIR															•	
EVO GRIS FONCE															•	
EVO GREYGE															•	
LE REVERSE																
NUIT			•		•	•		•	•	•						
TAUPE			•		•	•			•	•						
DUNE			•		•	•			•	•						
OPAL			•		•	•			•	•						
CARRIERE DU KRONOS																
NAMUR					•					•						
GENT					•					•						
BRUGES					•					•						
ROCKS																
SILVER BLACK			•					•		•						
PORFIDO		•	•					•				•				

VINTAGE

	≠ 9 mm GRIP R11							≠ 20 mm SKE 2.0		
	80x80 32"x32"	40x80 16"x32"	60x60 24"x24"	40x40 16"x16"	20x20 8"x8"	MODULO 120	MODULO 80	60x120 24"x48"	60x60 24"x24"	MODULO 120
PIERRE VIVE										
LOIRE ANCIENNE	•	•	•	•	•	•	•	•	•	•
ORVAL ANCIENNE	•	•	•	•	•	•	•	•	•	•
MORVAN ANCIENNE	•	•	•	•	•	•	•	•	•	•
BRIONNE ANCIENNE	•	•	•	•	•	•	•	•	•	•

HERITAGE

	≠ 9 mm GRIP R11			
	60x120 24"x48"	60x120 24"x48"	60x60 24"x24"	MODULO 120
NATIVA				
LUX FALDA	•	•	•	•
AURUM FALDA	•	•	•	•
TIBUR FALDA	•	•	•	•



CONFRONTO TRA GRES PORCELLANATO E MATERIALI NATURALI

COMPARISON BETWEEN PORCELAIN STONWARE AND NATURAL MATERIALS

	GRES	CEMENTO	PIETRA	LEGNO
Resistenza alle macchie <i>Stain resistance</i>	ALTA <i>HIGH</i>	BASSA <i>LOW</i>	BASSA <i>LOW</i>	BASSA <i>LOW</i>
Resistenza raggi UV <i>UV radiation resistance</i>	ALTA <i>HIGH</i>	BASSA <i>LOW</i>	MEDIA <i>MEDIUM</i>	BASSA <i>LOW</i>
Resistenza al gelo <i>Frost resistance</i>	ALTA <i>HIGH</i>	BASSA <i>LOW</i>	BASSA <i>LOW</i>	BASSA <i>LOW</i>
Resistenza allo sbiancamento <i>Fade resistance</i>	ALTA <i>HIGH</i>	BASSA <i>LOW</i>	BASSA <i>LOW</i>	MEDIA <i>MEDIUM</i>
Resistenza agli Acidi <i>Acid resistance</i>	ALTA <i>HIGH</i>	BASSA <i>LOW</i>	BASSA <i>LOW</i>	BASSA <i>LOW</i>
Resistenza ai graffi <i>Scratch resistance</i>	ALTA <i>HIGH</i>	BASSA <i>LOW</i>	BASSA <i>LOW</i>	MEDIA <i>MEDIUM</i>
Resistenza allo Scivolamento <i>Slip resistance</i>	ALTA <i>HIGH</i>	MEDIA <i>MEDIUM</i>	MEDIA <i>LOW</i>	BASSA <i>LOW</i>
Assorbimento all’acqua <i>Water absorption</i>	< 0,5%	< 5%	< 50%	< 8-12%

indicazioni di posa LAYING INSTRUCTION

Posa 2 cm in esterno

Conseguentemente alle dimensioni e natura delle lastre in gres porcellanato, alla forma pronunciata del rilievo antiscivociolo (che trattiene sempre un velo di acqua), particolare attenzione deve essere data alla % di pendenza e inclinazione, che il cliente vuole dare al piano pavimento nonché alla direzione di posa della lastra in gres. La % di inclinazione e pendenza della pavimentazione deve soddisfare le scelte architettoniche del progetto e le naturali necessità di deflusso delle acque meteoriche. Queste ultime variano in funzione alla zona geografica, all’orientamento ed esposizione della zona interessata, se è completamente scoperta ecc. A titolo esemplificativo e non vincolante l’ufficio UPI svizzero consiglia pendenze non inferiori all’1,5% per metro lineare.

Doghe pre fugate SKE 2.0 e Preinciso Exter 60 x 60 (1 cm)

Conseguentemente alla particolare struttura (basso rilievo preinciso) che riproduce un effetto doghe pre fugate, le dimensioni delle doghe esterne di ogni pezzo possono avere minime differenze dalle doghe interne. Questo dovuto al calibro di produzione che può avere variazioni dimensionali significative ad ogni produzione. Purtroppo questa variazione influenza solo le doghe esterne. Per questo motivo i prodotti in oggetto devono avere delle minime tolleranze estetiche, per migliorare le quali possiamo consigliare le seguenti contromisure:
1.Utilizzare Piedini con crocette di almeno 4 mm, così da avere la stessa dimensione per la fuga (SKE 2.0). Nella posa tradizionale utilizzare crocette sempre di 4 mm (che in sostanza si tratta di ripetere lo stesso dimensionamento delle fughe interne al pezzo).
2. Posare il materiale seguendo sempre lo stesso verso di produzione (verificabile dal tampono).
3. Adottare lo schema di posa a cesto.

Effetti sulle superfici delle dilatazioni termiche

Le forti escursioni termiche (-15° +70° nelle nostre zone) alle quali sono soggette le COPERTURE PIANE, comportano la necessità di considerarne gli effetti sui materiali da costruzione. Materiali che hanno spesso tra loro differente COEFFICIENTE TERMICO DI DILATAZIONE. Le NORMATIVE prevedono la realizzazione di appositi GIUNTI ELASTICI di DILATAZIONE nelle strutture costruttive, nel perimetro ed nel frazionamento delle solette.

Le nostre Pavimentazioni oltre ad avere un PROPRIO COEFFICIENTE TERMICO DI DILATAZIONE e un loro comportamento dinamico, poggiano e vengono pertanto installate su sottofondi e strutture che si muovono. Essi si CONTRAGGONO e si DILATANO in misura anche importante a seconda delle dimensioni per diversi CM. L’effetto che si potrebbe riscontrare anche in relazione alle zone di utilizzo delle pavimentazioni a secco è quello di un disallineamento delle fughe nel Sopraelevato o di sganciamento dei pezzi nel Modulo. Se fossero invece pavimentazioni incollate esse si potrebbero rompere e deteriorarsi. È pertanto indispensabile evitare/limitare l’insorgere di tali inestetismi, eseguendo un abbondante giunto perimetrale ed evitando, ove possibile lo stazionamento di forti pesi/strutture che impedirebbero il corretto movimento della pavimentazione. È indispensabile frazionare la pavimentazione nel caso del Modulo Plastico anche in corrispondenza del cambio di pendenza della soletta. A tale scopo, si consiglia l’uso degli accessori previsti nel catalogo e dei giunti elastici/coprigiunti reperibili normalmente, presso le rivendite specializzate.

Raccomandazioni per la posa sopraelevata del SKE 2.0

Il prodotto Monolitico SKE 2.0 auto portante è sicuramente IDONEO all’uso in esterno per appoggio e soprelevazione. Non esiste una normativa “specifica” per i prodotti da esterno in gres in sopraelevazione, la più vicina al nostro prodotto è quella relativa ad i manufatti in cemento. A tale normativa il nostro prodotto SKE 2.0 RISPONDE IN MODO MIGLIORATIVO su tutti i test comparativi, ad esempio resiste a +1400 kg per piastra (risultato del test al carico di rottura come da norma EN 1339 KN > 14). Questo vuole dire secondo lo standard adottato, che il materiale è idoneo “ALL’UTILIZZO COLLETTIVO e PUBBLICO SENZA LIMITAZIONE DELL’ALTEZZA DEI PIEDINI o TRAVERSINE”. Se confrontiamo invece il nostro prodotto SKE 2.0 con la normativa da sopraelevato da “INTERNO” il suo PUNTO DEBOLE è la RESISTENZA AL CARICO/URTO DINAMICO da CORPO DURO (caduta di un martello o materiale rigido di almeno 4,5 kg da 40 cm di altezza) EN 12825. Infatti la particolare rigidità del gres a questo tipo di test non ci aiuta, perché la piastra può rompersi o frantumarsi, bisogna pertanto considerare questo rischio e a fronte di ciò consigliare in alcune destinazioni d’uso come officine meccaniche o dove le altezze del pavimento sono superiori ai 10 cm l’utilizzo di protezioni da applicare sul retro delle piastre:
- vaschetta metallica sovrapposta
- vaschetta metallica incollata
- protezione in fibra incollata
Tali applicazioni non aumentano la portata del pavimento, ma sono solo la garanzia contro lo sfondamento e vanno a limitare il rischio di infortunio.

Sollelamento causa vento

Nota bene: nella posa sopraelevata il materiale è stabile grazie al suo peso e alla forza di gravità. È possibile che si possa verificare un sollelamento in circostanze atmosferiche gravose, quali forte vento e tornado. Importante quindi che il progettista verifichi la posizione della pavimentazione rispetto al vento e alla posizione geografica dell’intervento, e conseguentemente deve prevedere soluzioni architettoniche e ancoraggi meccanici ai fini di annullare questa problematica nei contesti sopraindicati.

Il raffronto con materiali naturali come legno, pietra e cemento evidenzia chiaramente i punti di forza del gres porcellanato in applicazioni per pavimenti esterni.

The comparison with natural materials such as wood, stone and concrete clearly reveals the strengths of porcelain stoneware in outdoor paving applications.

SKE 2.0

SKE 2.0

SKE 2.0

SKE 2.0

SKE 2.0

SKE 2.0

SKE 2.0

SKE 2.0

SKE 2.0

SKE 2.0

SKE 2.0

SKE 2.0

SKE 2.0

SKE 2.0

SKE 2.0

SKE 2.0

SKE 2.0

SKE 2.0

SKE 2.0

SKE 2.0

SKE 2.0

SKE 2.0

SKE 2.0

SKE 2.0

SKE 2.0

SKE 2.0

SKE 2.0

SKE 2.0

SKE 2.0

SKE 2.0

SKE 2.0

SKE 2.0

SKE 2.0

SKE 2.0

SKE 2.0

SKE 2.0

SKE 2.0

SKE 2.0

SKE 2.0

SKE 2.0

SKE 2.0

SKE 2.0

SKE 2.0

SKE 2.0

SKE 2.0

SKE 2.0

SKE 2.0

SKE 2.0

SKE 2.0

SKE 2.0

SKE 2.0

SKE 2.0

SKE 2.0

SKE 2.0

SKE 2.0

SKE 2.0

SKE 2.0

SKE 2.0

SKE 2.0

SKE 2.0

SKE 2.0

SKE 2.0

SKE 2.0

SKE 2.0

SKE 2.0

SKE 2.0

SKE 2.0

SKE 2.0

SKE 2.0

SKE 2.0

SKE 2.0

SKE 2.0

SKE 2.0

SKE 2.0

SKE 2.0

SKE 2.0

SKE 2.0

SKE 2.0

SKE 2.0

SKE 2.0

SKE 2.0

SKE 2.0

SKE 2.0

SKE 2.0

SKE 2.0

SKE 2.0

SKE 2.0

SKE 2.0

CARATTERISTICHE E PROPRIETÀ CHARACTERISTICS OR PROPERTIES CARACTÉRISTIQUES OU PROPRIÉTÉS EIGENSCHAFTEN UND GÜTEMERKMALE	NORME STANDARDS NORMES NORMEN	SECONDO LE NORME COMPLIANCE WITH STANDARDS CONFORME AUX NORMES ENTSPRECHEND DEN NORMEN UNI EN 14411 G	
---	---	--	--

QUALITÀ DELLA SUPERFICIE - SURFACE QUALITY - QUALITÉ DE LA SURFACE - OBERFLÄECHENQUALITÄET	ISO 10545-2	IL 95% MIN DELLE PISTRELLE DEVE ESSERE ESENTA DA DIFETTI VISIBILI / AT LEAST 95% OF THE TILES MUST BE FREE FROM VISIBLE FLAWS / 95% MIN DES CARREUX NE DOIVENT PRÉSENTER AUCUN DÉFAUT VISIBLE / MINDESTENS 95% DER FLIESEN MÜSSEN FREI VON SICHTBAREN	CONFORME ALLE NORME - COMPLIES WITH STANDARD - CONFORME AUX NORMES - NORMGERECHT		
		N ≥ 15cm %	N ≥ 15cm mm	RISULTATI TEST TEST RESULTS RESULTSTES DES ESSAIS PRÜFERGEBNIS	CONFORME ALLE NORME COMPLIES WITH STANDARD CONFORME AUX NORMES - NORMGERECHT
		± 0,3 %	± 0,8 mm	± 0,10%	CONFORME ALLE NORME COMPLIES WITH STANDARD CONFORME AUX NORMES - NORMGERECHT
		± 5 %	± 0,5 mm	± 5%	CONFORME ALLE NORME COMPLIES WITH STANDARD CONFORME AUX NORMES NORMGERECHT
		± 0,3 %	± 1,5 mm	± 0,20%	CONFORME ALLE NORME COMPLIES WITH STANDARD CONFORME AUX NORMES - NORMGERECHT
		± 0,4 %	± 1,8 mm	± 0,35%	CONFORME ALLE NORME COMPLIES WITH STANDARD CONFORME AUX NORMES - NORMGERECHT
		± 0,3 %	± 1,0 mm	± 0,15%	CONFORME ALLE NORME COMPLIES WITH STANDARD CONFORME AUX NORMES - NORMGERECHT

DEVIAZIONE MASSIMA DI RETTILINEITÀ IN % - MAXIMUM STRAIGHTNESS DEVIATION IN % - MARGE DE TOLERANCE DE RECTITUDE EN % - ZULAESSIGE HOECHSTABWEICHUNG DER KANTENGERADHEIT IN PROZENTEN					
--	--	--	--	--	--

DEVIAZIONE AMMISSIBILE IN %, DELLO SPESSORE MEDIO DI OGNI PIASTRELLA DALLA DIMENSIONE DI FABBRICAZIONE - ADMITTED DEVIATION, IN %, OF THE AVERAGE THICKNESS OF EACH TILE FROM THE PRODUCTION DIMENSIONS - MARGE DE TOLERANCE, EN POURCENTAGE, ENTRE L'ÉPAISSEUR MOYENNE DE CHAQUE CARREAU ET LA DIMENSION DE FABRICATION - ZULÄSSIGE ABWEICHUNG DER DURCHSCHNITTSDICKE JEDER FLIESE VOM HERSTELLMASS IN PROZENTEN					
--	--	--	--	--	--

DEVIAZIONE MASSIMA DI ORTOGONALITÀ IN % - MAXIMUM RIGHT-ANGLE DEVIATION IN % MARGE DE TOLÉRANCE D'ANGULARITÉ IN % - HOECHSTABWEICHUNG DER RECHTWINKLIGKEIT IN PROZENTEN					
---	--	--	--	--	--

PLANARITÀ - FLATNESS - PLANÉITÉ - EBENFLÄECHIGKEIT

LUNGHEZZA E LARGHEZZA - LENGTH AND WIDTH LONGUEUR ET LARGEUR - LÄNGE UND BREITE					
--	--	--	--	--	--

ASSORBIMENTO D' ACQUA - WATER ABSORPTION ABSORPTION D'EAU - WASSERAUFNAHME	ISO 10545-3	≤ 0,5 %	E ≤ = 0,04 %
---	--------------------	------------------------	-----------------------------

RESISTENZA ALLA FLESSIONE - BENDING STRENGTH RESISTANCE À LA FLEXION - BIEGEZUGFESTIGKEIT	ISO 10545-4	R ≥ 35 N/mm²	53 N/mm²
--	--------------------	--------------	----------

RESISTENZA ALL'URTO - IMPACT RESISTANCE RESISTANCE AUX CHOCs - SCHLAGFESTIGKEIT	ISO 10545-5	VALORE DICHIARATO - DECLARED VALUE - VALEUR DECLAREE - ANGEGEBENER WERT	0,88
--	--------------------	---	------

RESISTENZA ALL'ABRASIONE PROFONDA - RESISTANCE TO DEEP ABRASION RESISTANCE A L'ABRASION PROFONDE - WINDERSTANDSFAKKGKEIT GEGEN TIEFENABRIEB	ISO 10545-6	≤175 mm³	<128 mm³
--	--------------------	----------	----------

COEFF. DI DILATAZIONE TERMICA LINEARE - COEFFICIENT OF LINEAR THERMAL EXPANSION - COEFF. D'EXTENSION THERMIQUE LINEAIRE - LINEAR WÄRMEAUSDEHNUNGS-KOEFFIZIENT	ISO 10545-8	-	α=7x10 ⁻⁶ /°C ⁻¹
--	--------------------	---	--

RESISTENZA AGLI SBALZI TERMICI - THERMAL SHOCK RESISTANCE RESISTANCE AUX ECARTS THERMIQUES - TEMPERATURWECHSELBESTÄNDIGKEIT	ISO 10545-9	TEST SUPERATO SECONDO EN ISO 10545-1 - PASS ACCORDING EN ISO 10545-1 - TEST OBTENUS SELON EN ISO 10545-1 - TEST LAUT EN ISO 10545-1 BESTANDEN	NESSUN DANNO - NO DAMAGE - AUCUN DOMMAGE - KEIN SCHADEN
--	--------------------	---	---

RESISTENZA AL GELO - FROST RESISTANCE RESISTANCE AU GEL - FROSTBESTÄNDIGKEIT	ISO 10545-12	TEST SUPERATO SECONDO EN ISO 10545-1 - PASS ACCORDING EN ISO 10545-1 - TEST OBTENUS SELON EN ISO 10545-1 - TEST LAUT EN ISO 10545-1 BESTANDEN	NESSUN DANNO - NO DAMAGE - AUCUN DOMMAGE - KEIN SCHADEN
---	---------------------	---	---

RESISTENZA AGLI AGENTI CHIMICI - CHEMICAL RESISTANCE RESISTANCE A L'ATTAQUE CHIMIQUE - BÄSTÄNDIGKEIT GEGEN CHEMIKALIEN	ISO 10545-13	UB MIN.	UA ULA UHA
---	---------------------	---------	------------

RESISTENZA ALLE MACCHIE - RESISTANCE TO STAIN RESISTANCE AUX TACHES - FLECKENFESTIGKEIT	ISO 10545-14	VALORE DICHIARATO - DECLARED VALUE VALEUR DECLAREE - ANGEGEBENER WERT	Classe 5
--	---------------------	---	----------

RESISTENZA AL FUOCO - FIRE RESISTANCE RESISTANCE AU FEU - FEUERWIDERSTAND	EN 13501 - 1	VALORE DICHIARATO - DECLARED VALUE VALEUR DECLAREE - ANGEGEBENER WERT	CLASSE A1 - A1 FL
--	---------------------	---	-------------------

RESISTENZA ALLO SCIVOLAMENTO - SLIP RESISTANCE RESISTANCE AU GLISSEMENT - BESTIMMUNG DER RUSTSCHEMMENDE EIGENSHAFT			SKE2.0
---	--	--	---------------

B.C.R. C.A. B.C.R. G.B D. M. 236 DEL 4.6 1989	> 0,40	CONF
ASTM C 1028/07 BOT 3000	Dry SCOF > 0,60	CONF
ASTM C 1028/07 BOT 3000	Wet SCOF > 0,60	CONF
ANSI A137.1 BOT 3000	Wet DCOF > 0,42	CONF
DIN 51130	-	R11
DIN 51097	-	A+B+C
ENV 12633	≥ CL 1	CONF
UNI EN 13036 - 4 2011	≥ 36	CONF

STABILITÀ DEI COLORI ALLA LUCE E AI RAGGI U.V. COLOUR STABILITY ON EXPOSURE TO LIGHT AND UV RAYS STABILITE DES COULEURS À LA LUMIÈRE ET AUX RAYONS U.V. FARBECHTHEIT UNTER LICHTEINLUSS UND UV-STRAHLUNG			CONFORME ALLE NORME. NO VARIAZIONI COMPLIES WITH STANDARD. NO VARIATION CONFORME AUX NORMES, PAS DE CHANGEMENTS NORMGERECHT, KEINE AENDERUNG
--	--	--	--

SKE2.0			
CARICO STATICO - STATIC LOAD CHARGE STATIQUE - STATISCHER BELASTUNG	EN 12825	VALORE DICHIARATO - DECLARED VALUE - VALEUR DECLAREE - ANGEGEBENER WERT	CENTRO - CENTRE 9,6 KN CENTRO LATO CENTRE POINT OF SIDES 6,5 KN DIAGONALE - DIAGONAL 8,19 KN (CLASSE 3).

CARICO DINAMICO, PROVA DI URTO DI CORPI DURI - DYMANIC LAOD CAPACITY, HAND OBJECT IMPACT TEST C. STATIQUE, ESSAI DE CHOC DE CORPS DURS - STATISCHER BELASTUNG, AUSWIRKUNGEN TEST DER HARTEN KÖRPER	EN 12825	VALORE DICHIARATO - DECLARED VALUE - VALEUR DECLAREE - ANGEGEBENER WERT	TEST NON SUPERATO - TEST NOT PASSED TEST A ÉCHOUE - TEST FEHLGESCHLAGEN
---	-----------------	---	---

CARICO DINAMICO, PROVA DI URTO DI CORPI MORBIDI - DYMANIC LAOD CAPACITY, SOFT OBJECT IMPACT TEST C. STATIQUE, ESSAIS D'IMPACT DE CORPS MOUS - STATISCHER BELASTUNG, AUSWIRKUNGEN PRÜFUNG VON WEICHEN KÖRPERN	EN 12825	VALORE DICHIARATO - DECLARED VALUE - VALEUR DECLAREE - ANGEGEBENER WERT	TEST SUPERATO - TEST PASSED TEST REUSSI - TEST BESTANDEN
---	-----------------	---	--

RESISTENZA ALLA FLESSIONE, CARICO DI ROTTURA IN N - BENDIND STRENGTH, BREAKING FORCE IN N RESISTANCE À LA LFXION, CHARGE DE ROPTURE IN N - BIEGEFESTIGKEIT, BRUCHLAST EN N	EN 1339	Kn 14,38	CLASSE U14
---	----------------	----------	------------

CARICO DI ROTTURA IN MPA - BREAKING FORCE IN MPA - CHARGE DE ROPTURE IN MPA - BRÜCHLAST EN MPA		-	MPA 46,5
---	--	---	----------

terrain[®]