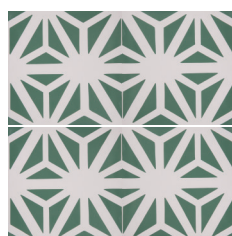




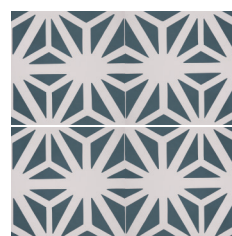
INDOCHINE®

MOJAVE

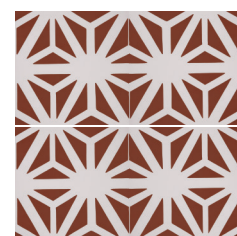
Our Palm Springs influenced Mid-Century Modern pattern, Mojave, says nothing but sun and fun. In an atmosphere where outdoor living is how you live the desert beckons a harmonious lifestyle aesthetic that is perfect for this cement tile. These colorways are strong enough to liven up both hospitality and residential projects alike and they provide the perfect visual to a bifurcated, indoor-outdoor environment.



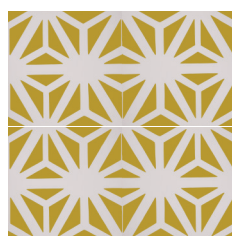
GREEN
STOCK



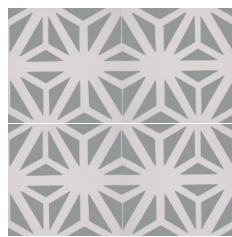
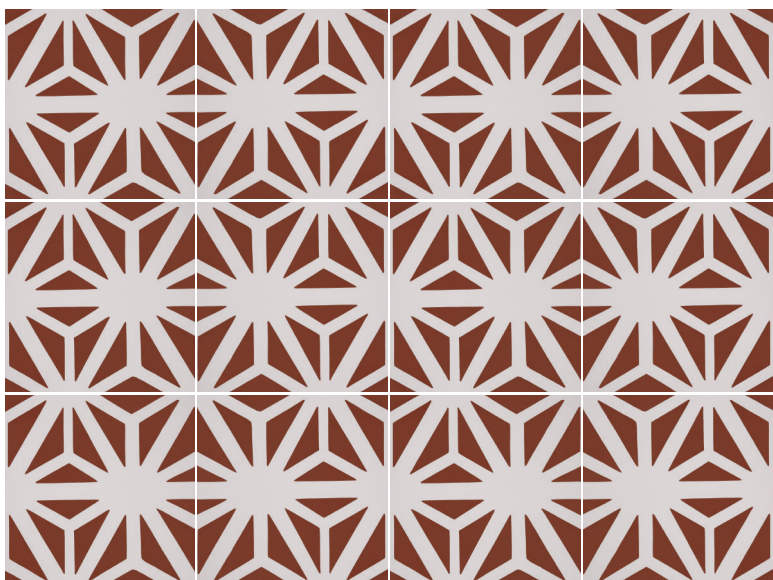
NAVY
STOCK



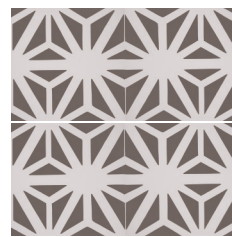
RED
STOCK



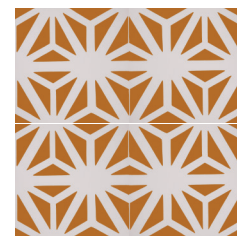
YELLOW
STOCK



LIGHT GRAY
SPECIAL ORDER



GRAY
SPECIAL ORDER



ORANGE
SPECIAL ORDER

CUSTOM COLOR ON REQUEST

Each encaustic cement tile is individually handmade using a hydraulic press and variations in color, pattern, and dimension are inherent. Prior to installation choose tiles from multiple boxes to ensure proper blending of colors.

APPLICATIONS

Encaustic tiles are suitable for walls and floors. They are commercially rated for slip resistance. They may be used outside where freeze-thaw conditions do not occur. We do not recommend they be submerged in fountains, pools, or shower pans. While sealers help mitigate fading, sun and moisture will fade all cement products and is expected.

STORAGE

Please leave tiles in their boxes until the time of installation. Do not store encaustic tiles outside. Do not let the boxes get wet as moisture may leave residue stains prior to installation.

CHECK YOUR BOXES

Ensure that you have the correct tile and that there are no defects. No claims can be made after the product is installed.

RECOMMENDED MATERIALS

Please refer to the Tile Council of North America Handbook for your particular installation

The following materials are recommended:

1. Nitrite gloves to avoid finger prints prior to sealing.
2. Waterproof membrane for the substrate to avoid moisture intake into the tiles.
3. Topical sealer for pre-install, pre-grouting and finish is (Aqua Mix Seal and Finish Low Sheen).
4. Rapid Set thinset will improve adhesion.
5. Light colored Custom Building Products Prism grout. We recommend Prism because it is color fast and handles narrow and wide joints equally well.
6. Penetrating sealer. After cleaning and grouting you may use either a penetrating sealer or another coat of topical sealer. We recommend Aqua Mix Sealer's Choice Gold for the penetrating sealer.
7. Wax for finishing. We recommend Fila Satin Look Protective Wax (Indoor applications only).
8. Lamb's wool applicator for applying the sealers and waxes.
9. Ram board to protect your newly installed floor from construction debris.

INSTALLATION

1. After you have sealed your tiles, it is time to set them. **First wipe off any dust from the back of the tile.** Make sure the adhesive is applied to the back of each tile (100% coverage) using a small notched trowel. Spread adhesive on floor and back butter the tiles like a natural stone installation. Do not use the dot method. Be careful not to allow any adhesive onto the surface of the tile. Any surplus should be wiped away with a clean, damp sponge. Refer to the FAQ section for more information about removing stains and grout haze.
2. Press: When installing, press the tiles down firmly into place by hand. You may use a rubber mallet only if you use a rubber faced beating block to disperse the energy.
3. It is important to seal the tile a second time before grouting.
4. Grout: White or light-colored grout is strongly recommended to avoid staining. Please refer to the FAQ section for more on grout. Recommended grout joint is 1/8".
5. Final Sealer Coat.
6. If desired, apply a coat of Fila Satin Look Protective Wax with a lamb's wool applicator. Please refer to the FAQ section for technique.

DAILY CARE AND MAINTENANCE

Clean the tile using mild soap. Do not use harsh chemicals such as bleach, ammonia or an acid. **DO NOT** use a broom on your floor. The bristles of the broom could scratch the surface of your tiles and remove the wax. It is best to vacuum the floor first and then mop. Clean spills as soon as possible.

PERIODIC CARE AND MAINTENANCE

Every few years the tile should be resealed and rewaxed. If there is heavy foot traffic in a commercial setting, you may elect to strip the wax, clean the tile using the methods below, reseat, and rewax.

FAQ

What if a tile has an imperfection? When inspecting your tiles, set aside any tile that you question. This is a natural product and is expected to have a range of variance. Most projects have anywhere from 15-25% of the tiles cut to conform to the space. The tiles set aside should be used for areas that require cut tiles.

What color grout should I choose? We recommend white or light-colored grout. Even with proper sealing prior to grouting, encaustic tiles are cementitious, porous products, and grout can penetrate the pores. Refer to the steps below to remove grout that has stained the tile. Avoid smearing the entire tile with grout when grouting.

How can I remove a stain from the tile? We find the following products helpful in removing small and medium stains: 320-400 grit sand paper and light sanding (a few back and forth motions) will remove a micro-layer of the material and the stain with it. Bar Keeper's Friend (BKF) found at hardware stores contain Oxalic acid and is excellent at removing stains and grout haze. To treat the stain, spray water on the tile, place the BKF on a white scrub pad, and let it mix with the water over the stained area. Allow the product to dwell for a few moments to chemically react, then lightly scrub. Wipe off with a sponge and clean water. If your tiles were sealed and waxed you will have to repeat this process because the BKF will remove both the sealer and wax with the stain.

What are the advantages of finishing with wax? Wax protects the tile from staining. It also adds an instant patina to your floor or wall. Wax cannot be used in outdoor applications.

Is there a technique for applying the sealer and wax for best results? Yes, we recommend a lamb's wool applicator, either handheld or on a pole. The technique is the same for both wax and sealer. Moisten the applicator and apply the product in a straight line. Avoid any swirling motions. Make sure excess product is buffed off.

Are there certain products NOT to use on my tile? Yes, **DO NOT** use the following on your tile: vinegar, acids, bleach, or other harsh chemicals.